



Hollum Tweendecker / geared

Vessel name	Built	IMO no.	Flag
Hollum	2009	9454216	Antigua & Barbuda
BBC Adriatic	2008	9378230	Antigua & Barbuda
BBC Caribbean	2008	9378242	Antigua & Barbuda
BBC Australia	2010	9569528	Antigua & Barbuda

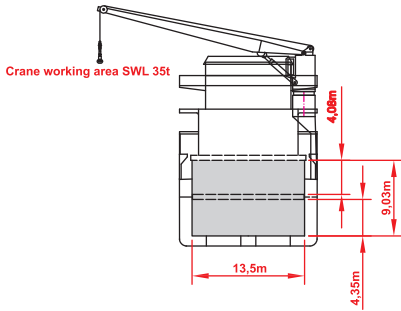
MAIN DATA

Vessel type	Multipurpose Tweendecker
Classification	Germanischer Lloyd
Ice class	E3 (Finish 1A)
GT/NT	5,232 / 2,382
DWCC (summer)	5,600 mt
Max. draft (summer)	5.70 m
Length o.a.	115.50 m
Breadth	16.50 m
Air draft (summer mark)	23,9 m
Design Speed	13.0 knots

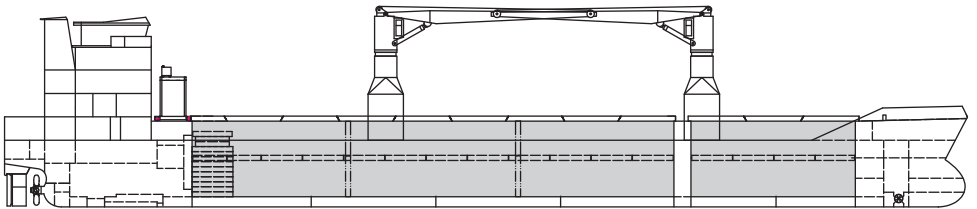
HOLDS/HATCHES/CRANES

Cargo hold capacity	9,329 cbm / 329,450 cbft
Floor space under deck	2,093 sqm / 22,529 sqft
Floor space on deck	1,046 sqm / 11,259 sqft
Cranes	2 NMF cranes situated portside 60 mt capacity each / 120 mt capacity combined
Deck strengths per sqm	15.00 mt on tanktop 2.50 mt on tweendeck 1.75 mt on hatchcovers

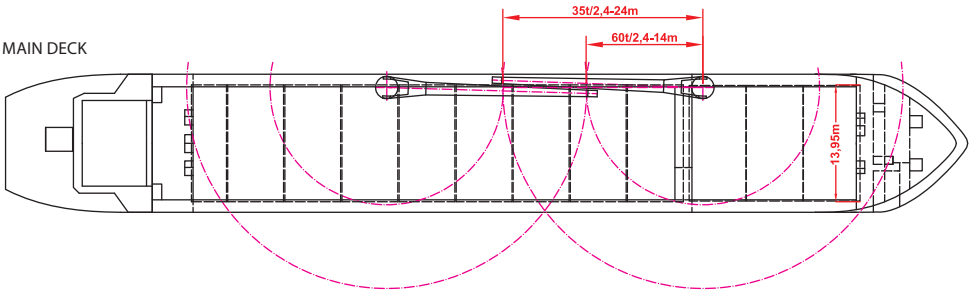
Speed figures are calculated basis maximum Beaufort 2, no swell and no adverse currents and assumes shaft generator and reefer plugs disconnected. Vessel is burning fuels according to minimum ISO 8217-2010. Intake is always subject to vessel's stability, trim, permissible weights and is subject to regulations of visibility. All details are given in good faith and are "about" and are given without guarantee. They must not be used as basis for charterparties or contracts without Briese Chartering's explicit written authority.



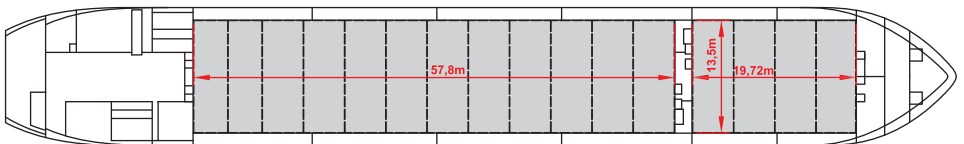
SIDE VIEW



MAIN DECK



TWEENDECK



HOLDS & DOUBLE BOTTOM

