



## Mila Tweendecker / gearless

Vessel name	Built	IMO no.	Flag
Mila	2013	9501681	Antigua & Barbuda
Louis	2013	9501679	Antigua & Barbuda

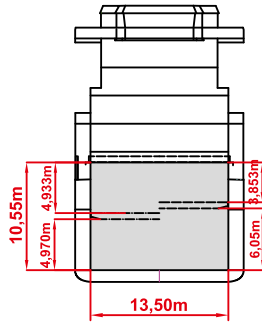
### MAIN DATA

Vessel type	Multipurpose Tweendecker
Classification	Germanischer Lloyd
Ice class	E3 (Finish 1A)
GT/NT	6310 / 2841
DWCC (summer)	7,500 mt
Max. draft (summer)	6.40 m
Length o.a.	128.42 m
Breadth	16.50 m
Air draft (summer mark)	29.20 m
Design Speed	13.5 knots

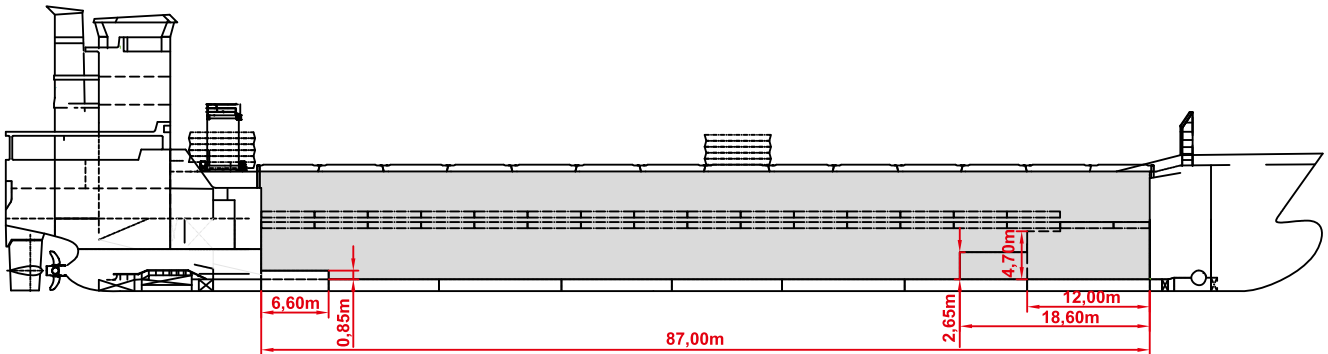
### HOLDS/HATCHES

Cargo hold capacity	10,770 cbm / 380,181 cbft
Floor space under deck	2,209 sqm / 23,769 sqft
Floor space on deck	1,201 sqm / 12,923 sqft
Deck strengths per sqm	20.00 mt on tanktop 3.50 mt on tweendeck 2.30 mt on hatchcovers

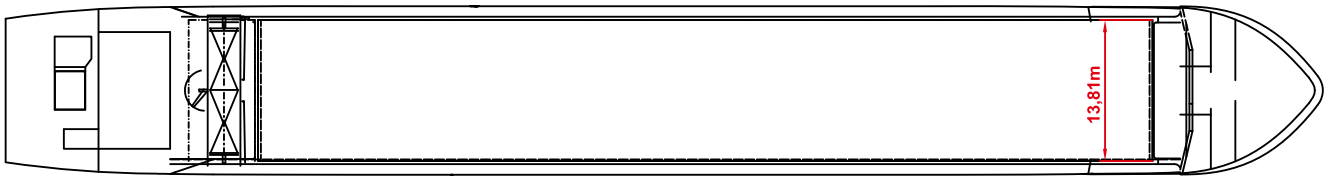
# Mila Tweendecker / gearless



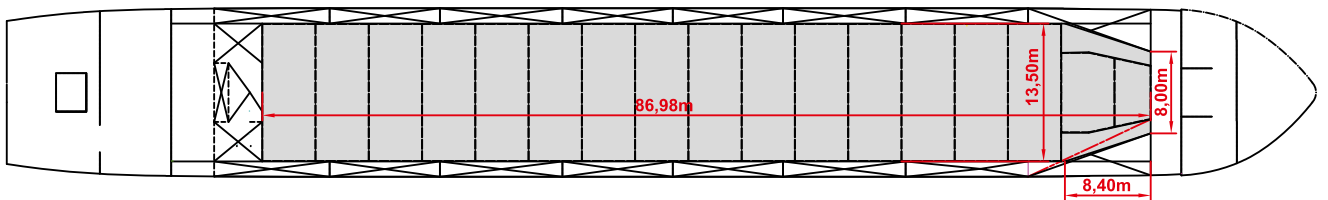
## SIDE VIEW



## MAIN DECK



## TWEENDECK



## HOLDS & DOUBLE BOTTOM

