



## Jansum Singledecker / gearless

| Vessel name | Built | IMO no. | Flag              |
|-------------|-------|---------|-------------------|
| Jansum      | 1998  | 9233420 | Antigua & Barbuda |
| Medum       | 1998  | 9155406 | Antigua & Barbuda |
| Berum       | 1998  | 9155418 | Antigua & Barbuda |

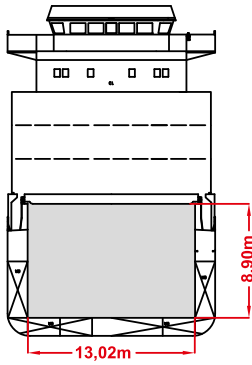
### MAIN DATA

|                         |                           |
|-------------------------|---------------------------|
| Vessel type             | Multipurpose Singledecker |
| Classification          | Germanischer Lloyd        |
| GT/NT                   | 4,113 / 2,005             |
| DWCC (summer)           | 4.800 mt                  |
| Max. draft (summer)     | 6.40 m                    |
| Length o.a.             | 100.60 m                  |
| Breadth                 | 16.20 m                   |
| Air draft (summer mark) | 29.80 m                   |
| Design Speed            | 14.1 knots                |

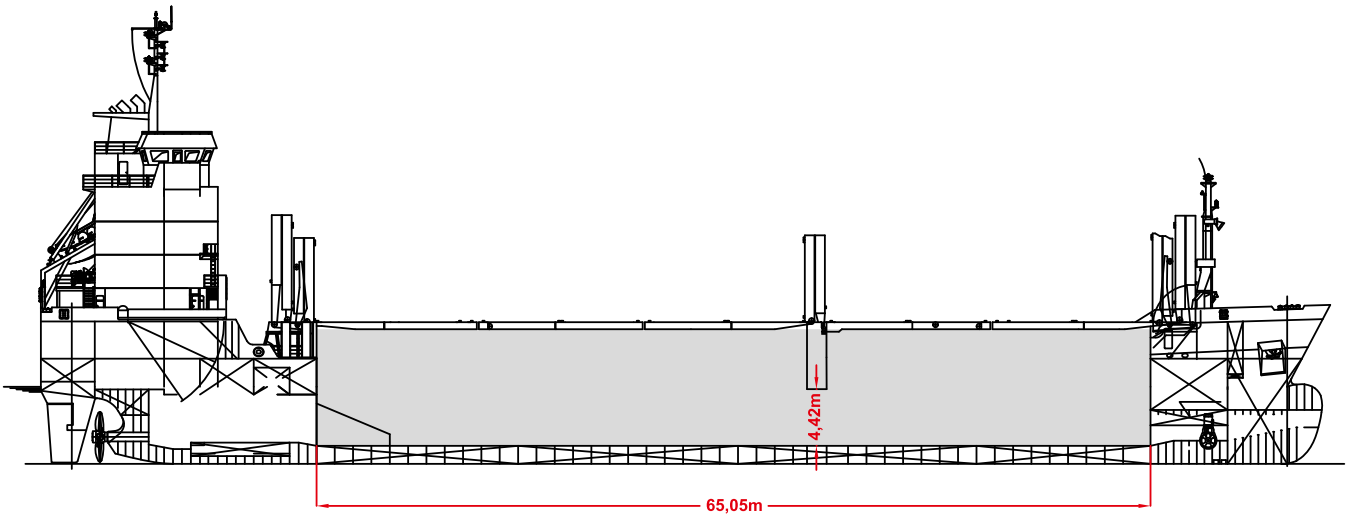
### HOLDS/HATCHES

|                        |   |
|------------------------|---|
| Cargo hold capacity    | 7,235 cbm / 255,501 cbft                      |
| Floor space under deck | 772 sqm / 8,307 sqft                          |
| Floor space on deck    | 859 sqm / 9,243 sqft                          |
| Deck strengths per sqm | 15.00 mt on tanktop<br>2.50 mt on hatchcovers |

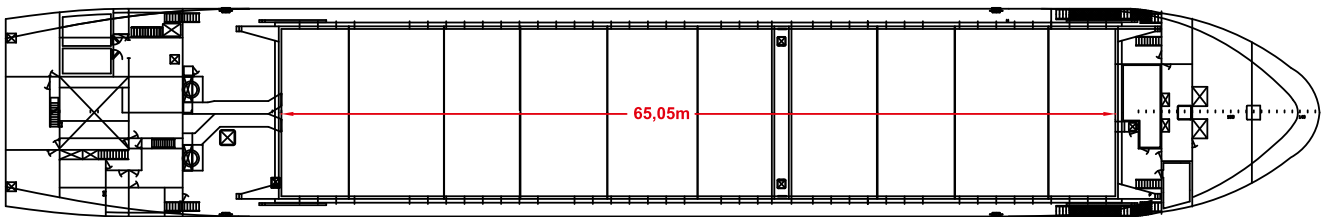
# Jansum Singledecker / gearless



## SIDE VIEW



## MAIN DECK



## HOLDS & DOUBLE BOTTOM

