



Deep Sea Pontoons

Pontoon name	Built	Flag
EMS Pontoon 2	2000	Germany
EMS Pontoon 6	2000	Germany
EMS Pontoon 7	2004	Germany

EMS Pontoon 2 / 6

Vessel type	Multipurpose Pontoon
Classification	Germanischer Lloyd
GT/NT	276 / 921
Deadweight (summer)	2,286 mt
Max. draft (summer)	3.25 m
Length o.a.	55.25 m
Breadth	17.30 m
Deck strengths per sqm	10.00 mt on deck 200.00 mt on designated areas

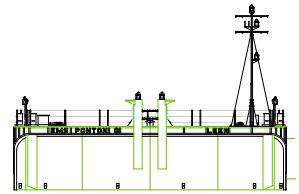
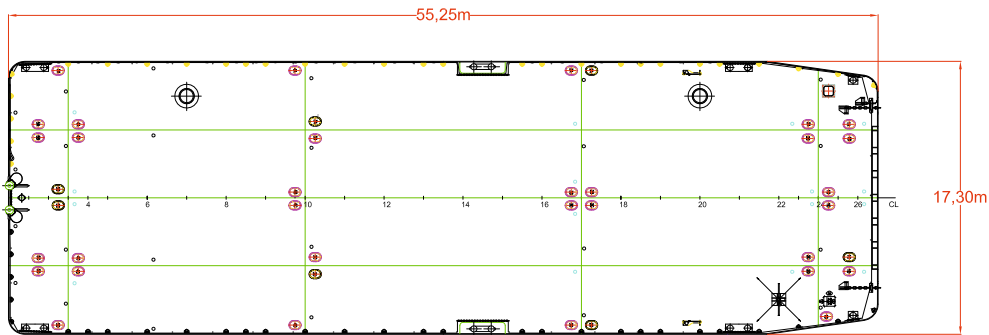
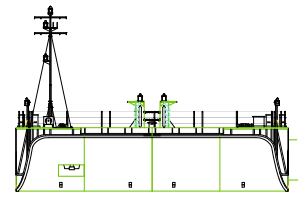
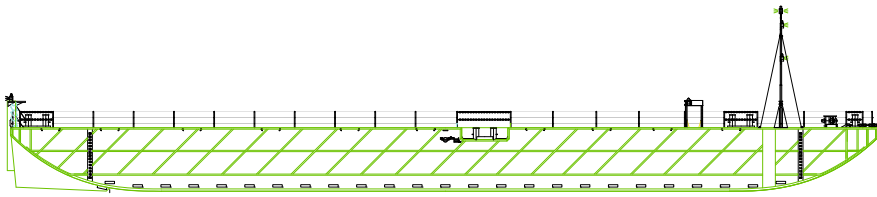
- Completely flush deck
- Removable railing
- Removable mast / winches
- RoRo ramps available
- Spud Trunks
- 19 ballast tanks
- 58 fixed lashing eyes

EMS Pontoon 7

Vessel type	Multipurpose Pontoon
Classification	Germanischer Lloyd
GT/NT	463 / 1546
Deadweight (summer)	4,400 mt
Max. draft (summer)	3.60 m
Length o.a.	72.30 m
Breadth	18.99 m
Deck strengths per sqm	10.00 mt on deck 200.00 mt on designated areas

- Completely flush deck
- Removable railing
- Removable mast / winches
- RoRo ramps available
- Spud Trunks
- 23 ballast tanks
- 75 fixed lashing eyes

EMS Pontoon 2 / 6



EMS Pontoon 7

