



4,325 DWT / 2 x 60 mt



BRIESE SCHIFFFAHRT

Vessel name	Built	IMO no.	Flag
BBC Romania	11/2006	9195420	Gibraltar

Ship's Basics

Type	Project Carrier Vessel Tweendecker
Builder	Rousse Shipyard, Bulgaria
Classification	DNV GL + 100 A5 E3 G + MC E3 AUT equipped for carriage of containers, strengthened for heavy cargoes, SOLAS II - 2 Reg. 54 19 DBC

Dimensions & Main Data

Tonnage GT/NT	3,198 / 1,725
Deadweight (summer)	4,325 mt
Length o.a.	98.90 m
Length p.p.	92.75 m
Beam	13.80 m
Max. draft (summer)	5.74 m
Max. speed	13.9 knots
Service speed	12.2 knots
Consumption at sea	10.4 mt fuel per day
Consumption in port	1.2 mt fuel per day (with crane operations) 0.7 mt fuel per day (without crane operations)
Fuel on ME	RME 180 / MGO DMA / MDO DMB
Fuel on AE	MGO DMA
Tank capacities	RME 180 abt. 275 cbm MGO DMA / MDO DMB abt. 65 cbm Ballast abt. 1,865 cbm Freshwater abt. 42 cbm

Propulsion

Main Engine	MaK 6M32C, 2880 kW
Aux.-Engines	Caterpillar, 2 x 260 kW
Propeller	Controllable pitch propeller

Hold and Hatch

Hold and Hatch	1 Hold / 2 Hatches
Hatch cover type	Pontoon type
Cargo hold capacity	6,374 cbm (225,095 cbft)
Floor space under deck	1,490 sqm (16,038 sqft)
Floor space on deck	790 sqm (8,503 sqft)
Deck strengths per sqm	15.00 mt on tanktop 2.50 mt on tweendeck 1.65 mt on deck
Tweendeck	1 height
Bulkheads	2 bh / 9 positions

Cargo Gear

Type	2 x 60 mt
Combinable	120 mt
Situated	Portside

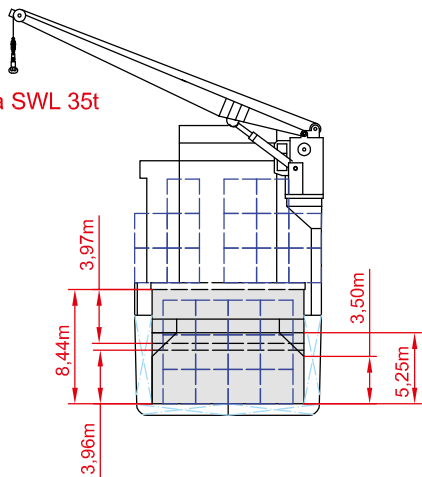
Container Capacity

Capacity	20' or 40' + 20'
Hold	120 / 48 / 24
Deck	154 / 67 / 18
Total	274 / 115 / 42
TEU at 14 mt	152
Reeferplugs	20 on deck
Stackload	20' / 40'
Hold	72 mt / 90.5 mt
Deck	25 mt / 32 mt

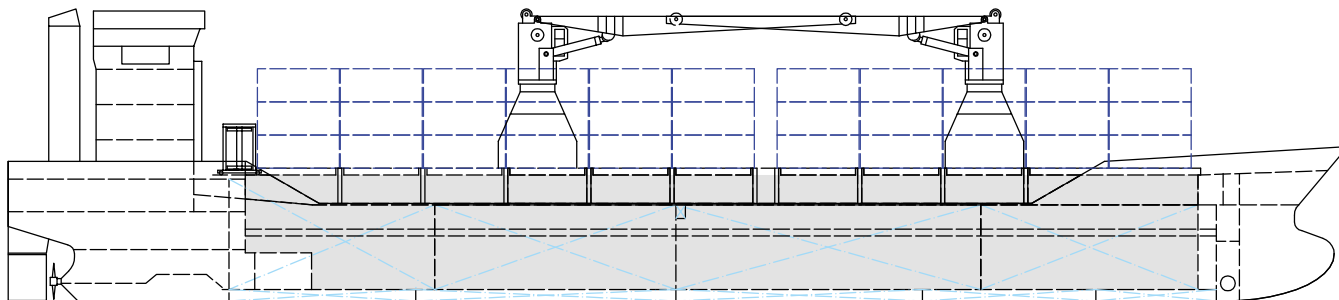
Special Equipment / Features

IMO classes	Fitted for carriage of dangerous goods of all IMO classes
Other	Grain and timber fitted Bow thruster; Shaft generator

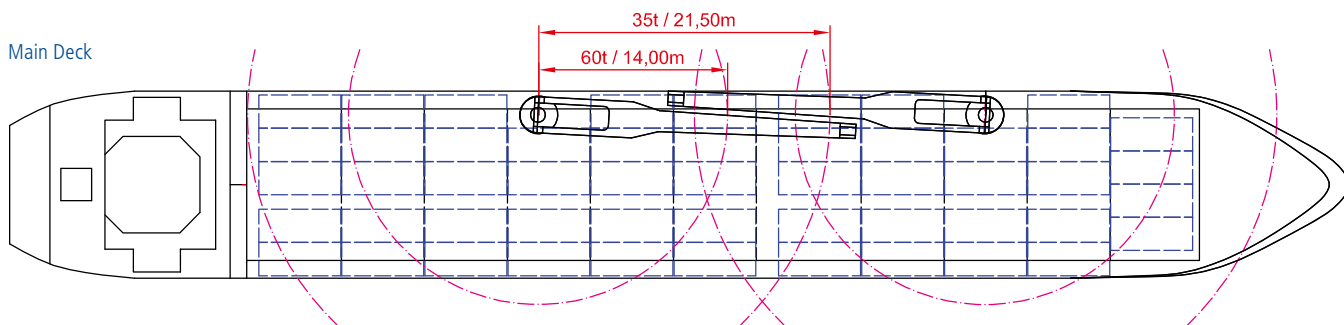
Crane working area SWL 35t



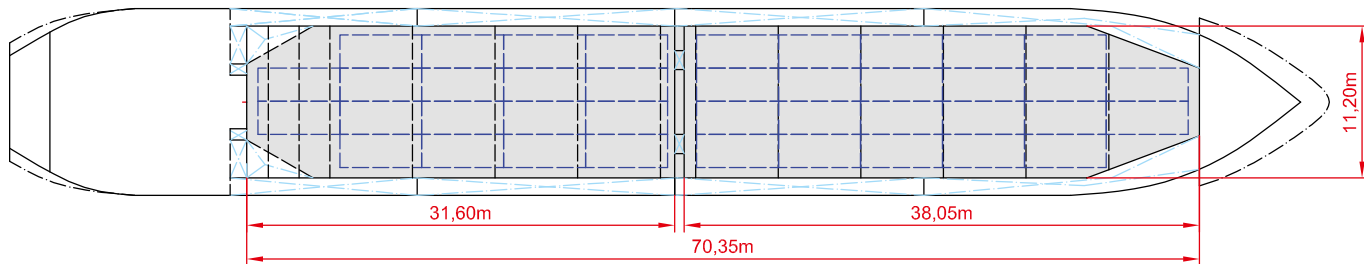
Side View



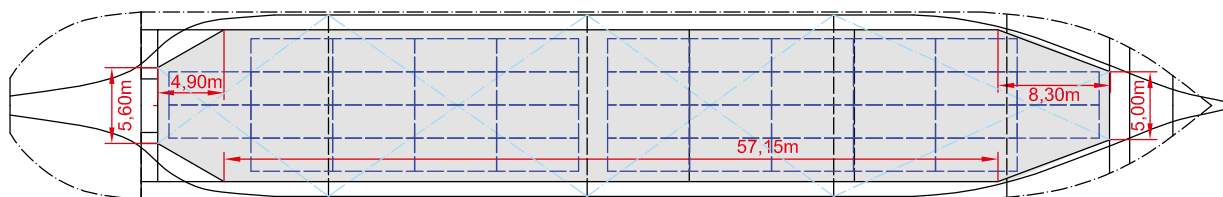
Main Deck



Tweendeck



Holds & Double Bottom



Max. speed is calculated basis 85% MCR, ballast condition, no deck cargo, maximum Beaufort 2, no swell, no adverse currents, clean hull and even keel. Service Speed and consumption at sea is calculated basis 75% MCR, laden condition, no deck cargo, maximum Beaufort 2, no swell, no adverse currents, clean hull and even keel. Eco speed is the minimum continuous speed in laden condition. Consumption data assumes reefer plugs and shaft generator disconnected but including AE if no shaft generator is installed. Vessel is burning fuel according to ISO 8217. Intake is always subject to vessel's stability, trim, permissible weights and is subject to regulations of visibility. Lifting capacity of vessel's cranes is subject to vessel's stability and can depend on cargo/ ballast on board. Container data as well as bale capacity assumes tweendeck ashore. All details including speed and consumption are given in good faith and are "about" and are given without guarantee. They must not be used as basis for charterparties or contracts without owner's explicit written authority.