



## 4,525 DWT / gearless



**BRIESE SCHIFFFAHRT**

Vessel name	Built	IMO no.	Flag	Vessel name	Built	IMO no.	Flag
Cimbris	09/2003	9281786	Gibraltar	Nordersand	11/2004	9289790	Gibraltar
Ditzum	11/2005	9323651	Gibraltar	Randzel	08/2006	9323651	Gibraltar

### Ship's Basics

<b>Type</b>	General Cargo Vessel Tweendecker
<b>Builder</b>	Rousse Shipyard, Bulgaria
<b>Classification</b>	GL + 100 A5 E3 G + MC E3 AUT equipped for carriage of containers, strengthened for heavy cargoes, SOLAS II - 2 Reg. 54

### Dimensions & Main Data

<b>Tonnage GT/NT</b>	3,173 / 1,725
<b>Deadweight (summer)</b>	4,525 mt
<b>Length o.a.</b>	98.90 m
<b>Length p.p.</b>	92.50 m
<b>Beam</b>	13.80 m
<b>Max. draft (summer)</b>	5.74 m
<b>Max. speed</b>	13.9 knots
<b>Service speed</b>	12.2 knots
<b>Consumption at sea</b>	10.4 mt fuel per day
<b>Consumption in port</b>	0.7 mt fuel per day
<b>Fuel on ME</b>	RME 180 / MGO DMA / MDO DMB
<b>Fuel on AE</b>	MGO DMA
<b>Tank capacities</b>	RME 180 abt. 275 cbm MGO DMA / MDO DMB abt. 65 cbm Ballast abt. 1,865 cbm Freshwater abt. 42 cbm

### Propulsion

<b>Main Engine</b>	MaK 6M32C, 2880 kW
<b>Aux.-Engines</b>	Caterpillar (Ditzum), 2 x 260 kW Caterpillar (Nordersand), 2 x 215 kW Caterpillar (Randzel), 2 x 280 kW Caterpillar (Cimbris), 2 x 160 kW
<b>Propeller</b>	Controllable pitch propeller

### Hold and Hatch

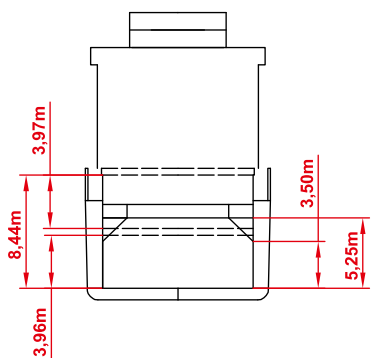
<b>Hold and Hatch</b>	1 Hold / 1 Hatch
<b>Hatch cover type</b>	Pontoon type
<b>Cargo hold capacity</b>	5,720 cbm (202,000 cbft)
<b>Floor space under deck</b>	1,490 sqm (16,038 sqft)
<b>Floor space on deck</b>	790 sqm (8,503 sqft)
<b>Deck strengths per sqm</b>	15.00 mt on tanktop 2.50 mt on tweendeck 1.68 mt on deck
<b>Tweendeck</b>	1 height
<b>Bulkheads</b>	2 bh / 9 positions

### Container Capacity

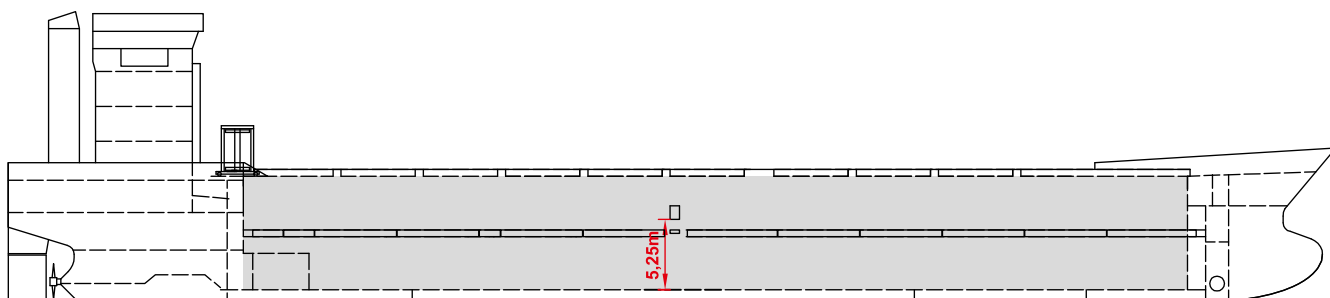
<b>Capacity</b>	20' or 40' + 20'
<b>Hold</b>	120 / 48 / 24
<b>Deck</b>	162 / 75 / 12
<b>Total</b>	282 / 123 / 36
<b>TEU at 14 mt</b>	152
<b>Reeferplugs</b>	20 on deck
<b>Stackload</b>	20' / 40'
<b>Tanktop</b>	72 mt / 91.5 mt
<b>Deck</b>	25 mt / 35 mt

### Special Equipment / Features

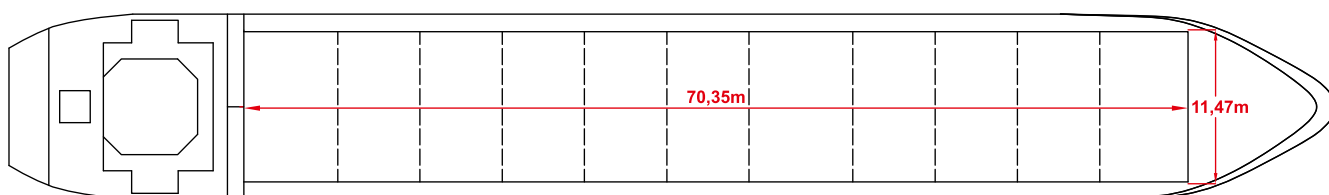
<b>IMO classes</b>	Fitted for carriage of dangerous goods of all IMO classes
<b>Other</b>	Fitted for grain, timber, solid bulks Bow thruster; Shaft Generator



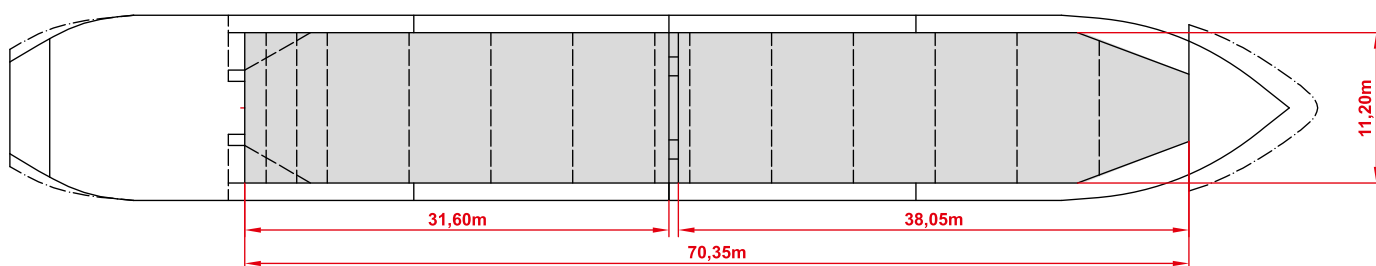
Side View



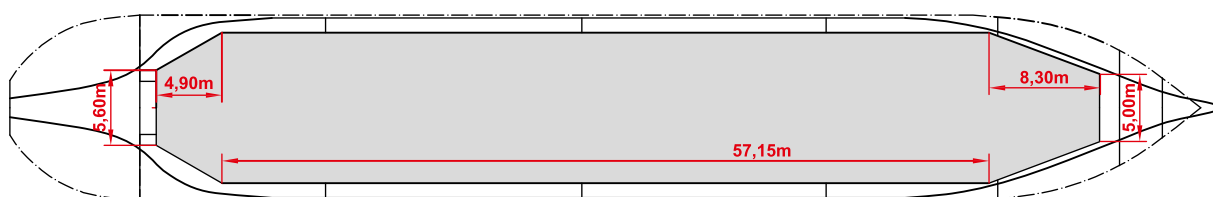
Main Deck



Tweendeck



Hold & Double Bottom



Max. speed is calculated basis 85% MCR, ballast condition, no deck cargo, maximum Beaufort 2, no swell, no adverse currents, clean hull and even keel. Service Speed and consumption at sea is calculated basis 75% MCR, laden condition, no deck cargo, maximum Beaufort 2, no swell, no adverse currents, clean hull and even keel. Eco speed is the minimum continuous speed in laden condition. Consumption data assumes reefer plugs and shaft generator disconnected but including AE if no shaft generator is installed. Vessel is burning fuel according to ISO 8217. Intake is always subject to vessel's stability, trim, permissible weights and is subject to regulations of visibility. Lifting capacity of vessel's cranes is subject to vessel's stability and can depend on cargo/ ballast on board. Container data as well as bale capacity assumes tweendeck ashore. All details including speed and consumption are given in good faith and are "about" and are given without guarantee. They must not be used as basis for charterparties or contracts without owner's explicit written authority.