



5,565 DWT / 2 x 40 mt



BRIESE SCHIFFAHRT

Vessel name	Built	IMO no.	Flag
Blikur	07/2003	9261994	Antigua & Barbuda

Vessel name	Built	IMO no.	Flag
Lómur	05/2002	9251509	Gibraltar

Ship's Basics

Type	Multi Purpose Vessel Singledecker
Builder	Qingshan Shipyard, Wuhan, China
Classification	DNV GL + 100 A5 E G + MC E AUT equipped for carriage of containers, SOLAS II - 2 Reg. 19

Dimensions & Main Data

Tonnage GT/NT	4,454 / 2,141
Deadweight (summer)	5,560 mt (Lómur) / 5,565 mt (Blikur)
Length o.a.	100.60 m
Length p.p.	95.90 m
Beam	18.80 m
Max. draft (summer)	6.65 m
Max. speed	16.0 knots
Service speed	15.0 knots
Consumption at sea	17.0 mt fuel per day
Consumption in port	2.0 mt fuel per day (with crane operations) 1.6 mt fuel per day (without crane operations)
Fuel on ME	RMG 380 / RME 180 / MGO DMA / MDO DMB
Fuel on AE	MGO DMA
Tank capacities	RMG 380 / RME 180 abt. 540 cbm MGO DMA / MDO DMB abt. 99 cbm Ballast abt. 2,086 cbm Freshwater abt. 66 cbm

Propulsion

Main Engine	MaK 9M 32C, 4,320 kW
Aux.-Engines	Volvo Penta, 2 x 422 kW
Propeller	Controllable pitch propeller

Hold and Hatch

Hold and Hatch	3 Holds / 3 Hatches
Hatch cover type	Folding type
Cargo hold capacity	7,177 cbm (253,452 cbft)
Floor space under deck	874 sqm (17,889 sqft)
Floor space on deck	840 sqm (20,160 sqft)
Deck strengths per sqm	10.00 mt on tanktop 1.75 mt on deck
Tweendeck	n / a
Bulkheads	n / a

Cargo Gear

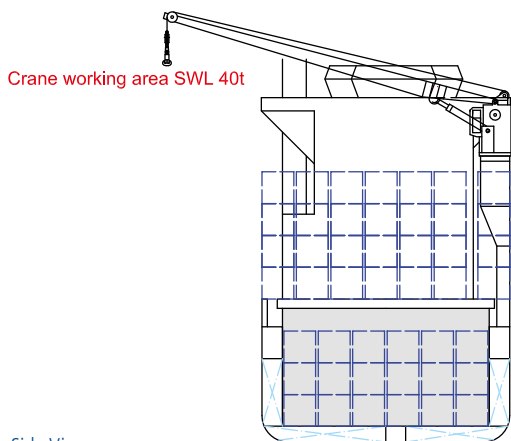
Type	2 x 40 mt NMF
Combinable	80 mt
Situated	Portside

Container Capacity

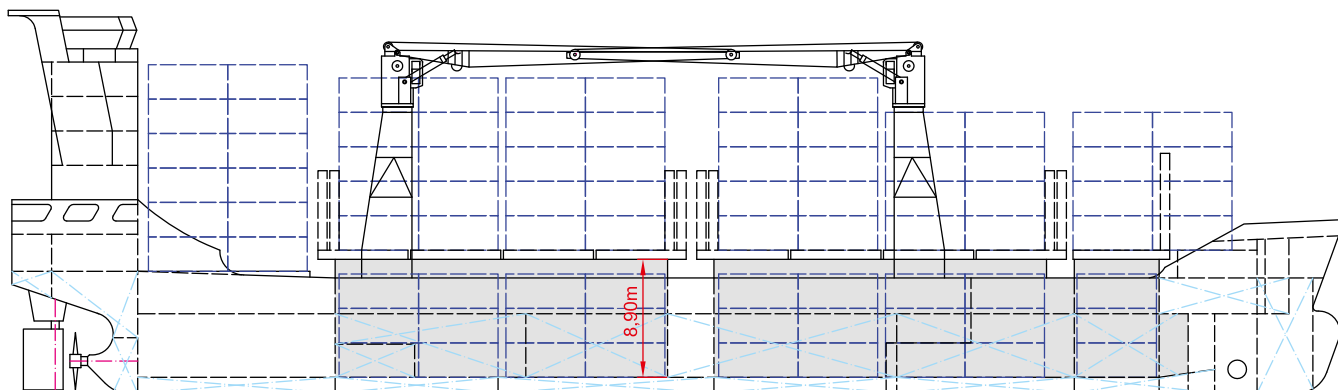
Capacity	20' or 40' + 20'
Hold	141 / 64 + 13
Deck	364 / 170 + 19
Total	505 / 234 + 32
TEU at 14 mt	269
Reeferplugs	84 (72 at same time; 72 on deck / 12 in hold no. 2)
Stackload	20' / 40'
Hold	72 mt / 105 mt
Twd	36 mt / 50 mt
Deck	45 mt / 65 mt
Special	Equipped for wide bodies (2.50 m), high cubes (9'6") movable cellguides can be used for 40' and 45' containers

Special Equipment / Features

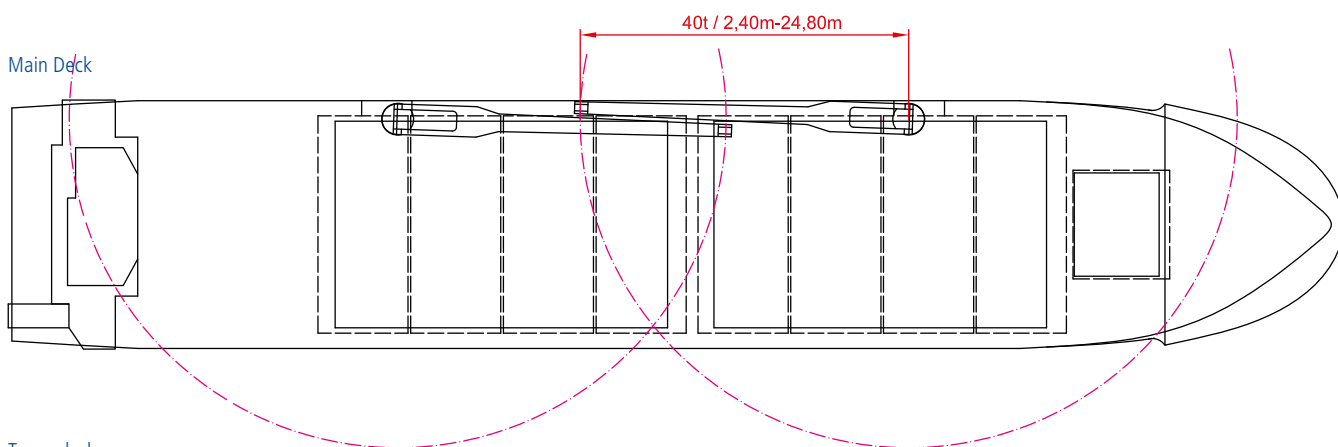
IMO classes	Fitted for carriage of dangerous goods of all IMO classes
Other	Freshwater generator: 10 mt/day Bow thruster; Shaft generator



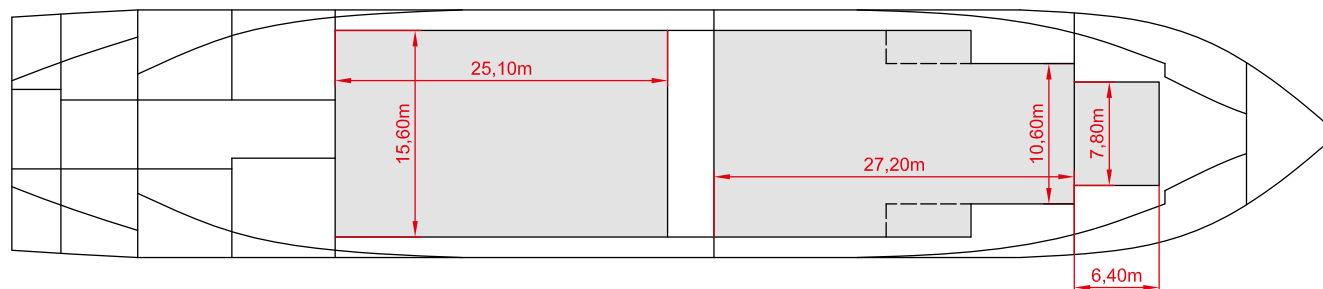
Side View



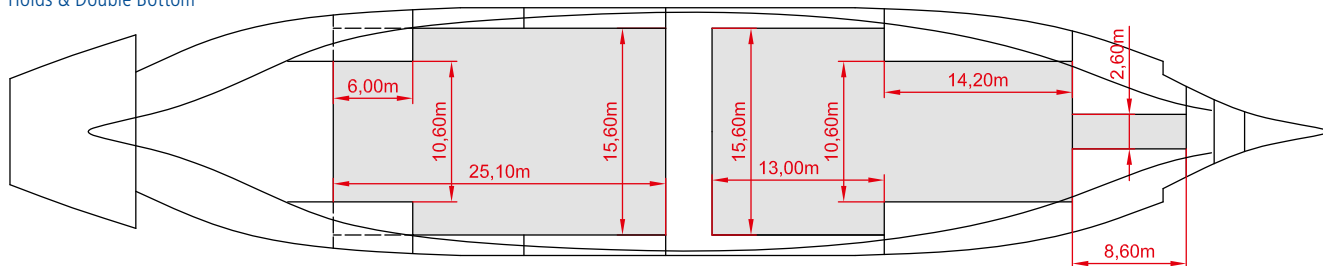
Main Deck



Tweendeck



Holds & Double Bottom



Max. speed is calculated basis 85% MCR, ballast condition, no deck cargo, maximum Beaufort 2, no swell, no adverse currents, clean hull and even keel. Service Speed and consumption at sea is calculated basis 75% MCR, laden condition, no deck cargo, maximum Beaufort 2, no swell, no adverse currents, clean hull and even keel. Eco speed is the minimum continuous speed in laden condition. Consumption data assumes reefer plugs and shaft generator disconnected but including AE if no shaft generator is installed. Vessel is burning fuel according to ISO 8217. Intake is always subject to vessel's stability, trim, permissible weights and is subject to regulations of visibility. Lifting capacity of vessel's cranes is subject to vessel's stability and can depend on cargo/ ballast on board. Container data as well as bale capacity assumes tweendeck ashore. All details including speed and consumption are given in good faith and are "about" and are given without guarantee. They must not be used as basis for charterparties or contracts without owner's explicit written authority.