



## 12,000 DWT / 2 x 80 mt



**BRIESE SCHIFFFAHRT**

Vessel name	Built	IMO no.	Flag
BBC Jade	01/2008	9421116	Antigua & Barbuda

### Ship's Basics

<b>Type</b>	Project Carrier Vessel Tweendecker
<b>Builder</b>	Damen Shipyard, Okean / Ukraine
<b>Classification</b>	LR + 100 A1 + LMC, UMS + SCM strengthened for Heavy Cargoes, Holds are equipped for dangerous cargo according SOLAS II-2 Regulation 19

### Dimensions & Main Data

<b>Tonnage GT/NT</b>	8,999 / 4,600
<b>Deadweight (summer)</b>	12,000 mt
<b>Length o.a.</b>	142.95 m
<b>Length p.p.</b>	134.96 m
<b>Beam</b>	18.90 m
<b>Max. draft (summer)</b>	7.90 m
<b>Max. speed</b>	15.4 knots
<b>Service speed</b>	14.5 knots
<b>Consumption at sea</b>	21.5 mt fuel per day
<b>Consumption in port</b>	3.0 mt fuel per day (with crane operations) 1.5 mt fuel per day (without crane operations)
<b>Fuel on ME</b>	RMG 380 / RME 180 / MGO DMA / MDO DMB
<b>Fuel on AE</b>	MGO DMA
<b>Tank capacities</b>	RMG 380 / RME 180 abt. 815 cbm MGO DMA / MDO DMB abt. 101 cbm Ballast abt. 4,713 cbm Freshwater abt. 77 cbm

### Propulsion

<b>Main Engine</b>	MAK 6M43C, 6000 kW
<b>Aux.-Engines</b>	Mitsubishi, 3 x 430 kW
<b>Propeller</b>	Controllable pitch propeller

### Hold and Hatch

<b>Hold and Hatch</b>	2 Holds / 2 Hatches
<b>Hatch cover type</b>	Folding type
<b>Cargo hold capacity</b>	No.1: 6,675 cbm (235,724 cbft) No.2: 10,582 cbm (373,699 cbft) Total: 17,257 cbm (609,245 cbft)
<b>Floor space under deck</b>	2,844 sqm (30,612 sqft)
<b>Floor space on deck</b>	1,459 sqm (15,704 sqft)
<b>Deck strengths per sqm</b>	18.00 / local 20.00 mt on tanktop 4.00 mt on tweendeck 2.00 mt on deck
<b>Tweendeck</b>	1 height
<b>Bulkheads</b>	2 bh / 18 positions

### Cargo Gear

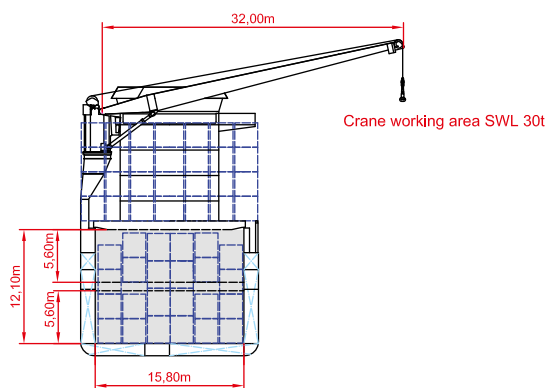
<b>Type</b>	2 x 80 mt
<b>Combinable</b>	160 mt
<b>Situated</b>	Starboard

### Container Capacity

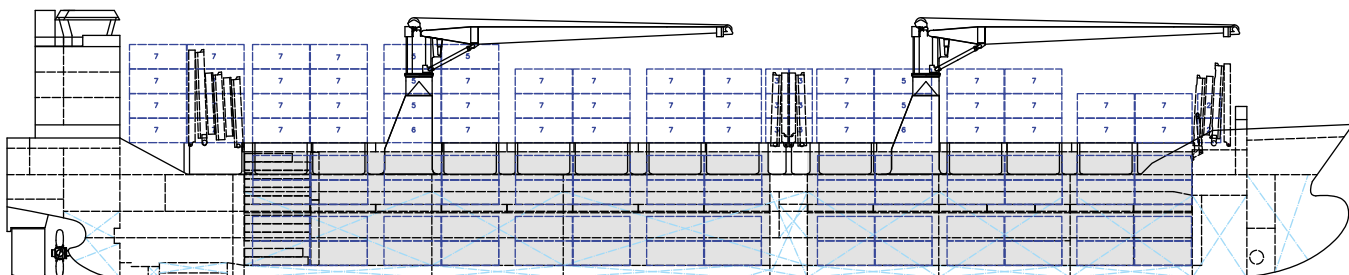
<b>Capacity</b>	20' or 40' + 20'
<b>Hold</b>	312 / 152 / x
<b>Deck</b>	372 / 178 / x
<b>Total</b>	684 / 330 / x
<b>TEU at 14 mt</b>	455
<b>Refeerplugs</b>	80, 40 between hold No.1 & No.2 / 40 at the aft side cargo hold No.2
<b>Stackload</b>	20' / 40'
<b>Hold</b>	100 mt; 135 mt
<b>Deck</b>	50 mt; 65 mt
<b>Specials</b>	Equipped for 45' containers on deck and in hold

### Special Equipment / Features

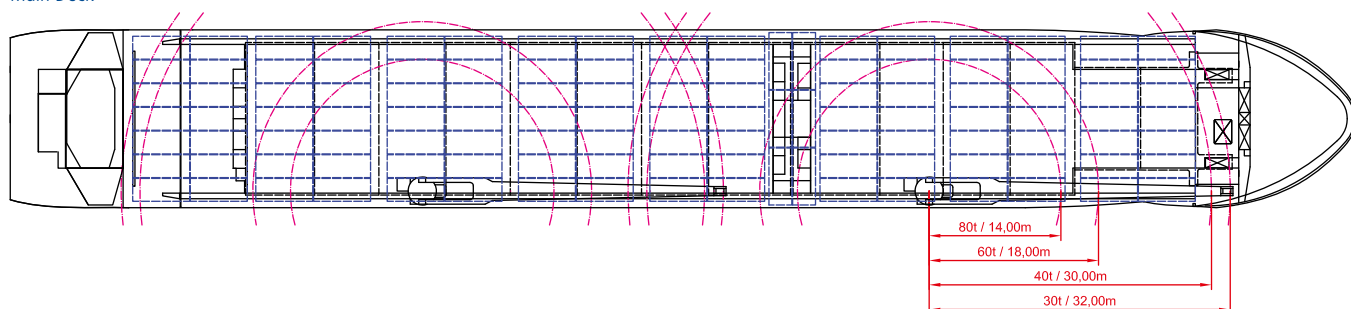
<b>IMO classes</b>	Fitted for carriage of dangerous goods of all IMO classes
<b>Other</b>	Freshwater Generator; St. Lawrence, Seaway Reg., Bow thruster; Shaft generator



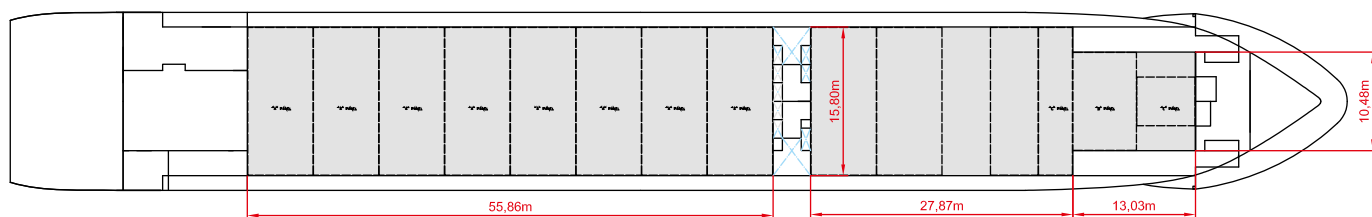
Side View



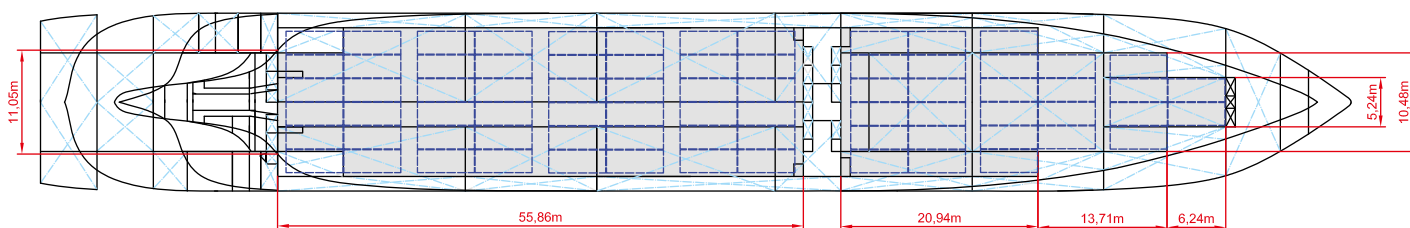
Main Deck



Tweendeck



Holds & Double Bottom



Max. speed is calculated basis 85% MCR, ballast condition, no deck cargo, maximum Beaufort 2, no swell, no adverse currents, clean hull and even keel. Service Speed and consumption at sea is calculated basis 75% MCR, laden condition, no deck cargo, maximum Beaufort 2, no swell, no adverse currents, clean hull and even keel. Eco speed is the minimum continuous speed in laden condition. Consumption data assumes reefer plugs and shaft generator disconnected but including AE if no shaft generator is installed. Vessel is burning fuel according to ISO 8217. Intake is always subject to vessel's stability, trim, permissible weights and is subject to regulations of visibility. Lifting capacity of vessel's cranes is subject to vessel's stability and can depend on cargo/ ballast on board. Container data as well as bale capacity assumes tweendeck ashore. All details including speed and consumption are given in good faith and are "about" and are given without guarantee. They must not be used as basis for charterparties or contracts without owner's explicit written authority.