



17,000 DWT / 2x250mt + 1x80mt



BRIESE SCHIFFFAHRT

| Vessel name | Built | IMO no. | Flag |
|-------------|---------|---------|-------------------|
| BBC Congo | 01/2010 | 9436331 | Antigua & Barbuda |
| BBC Nile | 03/2011 | 9571375 | Antigua & Barbuda |
| BBC Danube | 12/2012 | 9571399 | Antigua & Barbuda |

| Vessel name | Built | IMO no. | Flag |
|-------------|---------|---------|-------------------|
| BBC Ganges | 04/2010 | 9508304 | Antigua & Barbuda |
| BBC Seine | 10/2010 | 9508380 | Antigua & Barbuda |
| BBC Parana | 09/2012 | 9571387 | Antigua & Barbuda |

Ship's Basics

| | |
|-----------------------|--|
| Type | Premium Project Carrier Vessel Tweendecker |
| Builder | Tianjin Xingang Shipyard / China |
| Classification | GL, 100 A5 ICE E3, G IW, strengthened for Heavy Cargo, equipped for carriage of containers, equipped for the carriage of dangerous goods according to SOLAS II-2, Reg. 19, MC E3 AUT EP-D, CM-PS (not BBC Congo, BBC Ganges) |

Dimensions & Main Data

| | |
|------------------------------|---|
| Tonnage GT/NT | 12,980 / 5,334 |
| Deadweight (summer) | 17,000 mt |
| Length o.a. | 143.14 m |
| Length p.p. | 134.43 m |
| Beam | 22.80 m |
| Max. draft (summer) | 9.70 m |
| Max. speed | 16.3 knots |
| Service speed | 14.6 knots |
| Consumption at sea | 23.2 mt fuel per day + 2.2 mt AE |
| Eco speed | 13.0 knots |
| Consumption eco speed | 17.5 mt fuel per day + 2.2 mt AE |
| Consumption in port | 3.0 mt fuel per day (with crane operations) 1.50 mt fuel per day (without crane operations) |
| Fuel on ME | RMG 380 / RME 180 / MGO DMA / MDO DMB |
| Fuel on AE | MGO DMA |
| Tank capacities | RMG 380 / RME 180 abt. 1,458 cbm MGO DMA / MDO DMB abt. 145 cbm Ballast abt. 6,211 cbm Freshwater abt. 259 cbm |

Propulsion

| | |
|---------------------|-----------------------------------|
| Main Engine | MAN B&W 6S46MC-C, 7074 kW |
| Aux.-Engines | Yanmar, 3 x 660 kW |
| Propeller | Four bladed fixed pitch propeller |

Hold and Hatch

| | |
|-------------------------------|--|
| Hold and Hatch | 2 Holds / 2 Hatches |
| Hatch cover type | Folding type |
| Cargo Hold capacity | 19,777 cbm (698,418 cbft) |
| Floor space under deck | 2,986 sqm (32,141 sqft) |
| Floor space on deck | 1,486 sqm (16,002 sqft) |
| Deck strengths per sqm | 20.00 mt on tanktop 4.70 mt on tweendeck 2.20 mt on deck |
| Tweendeck | Hold 1: 1 height Hold 2: 2 heights |
| Bulkheads | 2 bh / 2 positions |

Cargo Gear

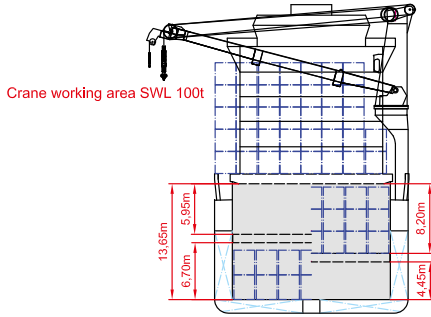
| | |
|-------------------|----------------------------|
| Type | 2 x 250 mt / 1 x 80 mt NMF |
| Combinable | 500 mt |
| Situated | Portside |

Container Capacity

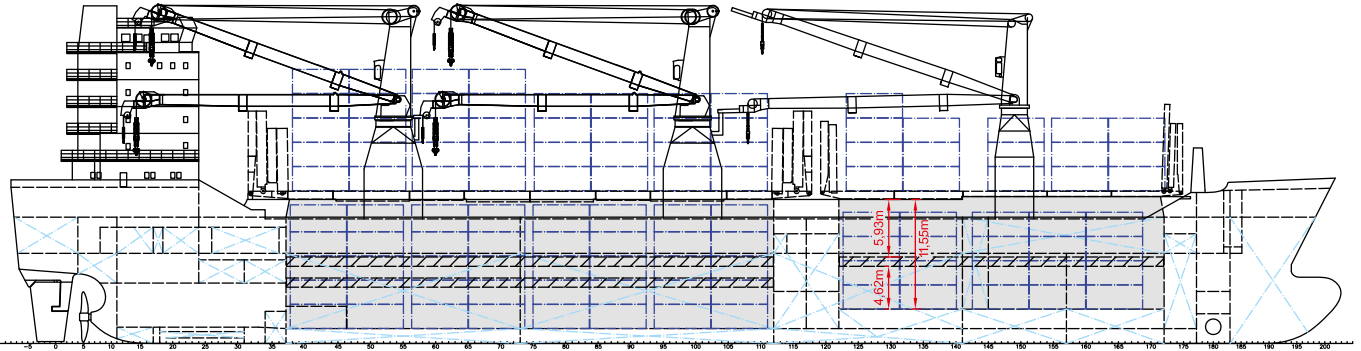
| | |
|--------------------|---|
| Capacity | 20' or 40' + 20' |
| Hold | 408 / 193 / 22 |
| Deck | 550 / 225 / 100 |
| Total | 958 / 418 / 122 |
| Reeferplugs | 60 |
| Stackload | 20' / 40' |
| Hold | 125 mt / 175 mt |
| Twd | 45 mt / 60 mt |
| Deck | 60 mt / 90 mt |
| Specials | Equipped for 30' container, wide body and high cube container |

Special Equipment / Features

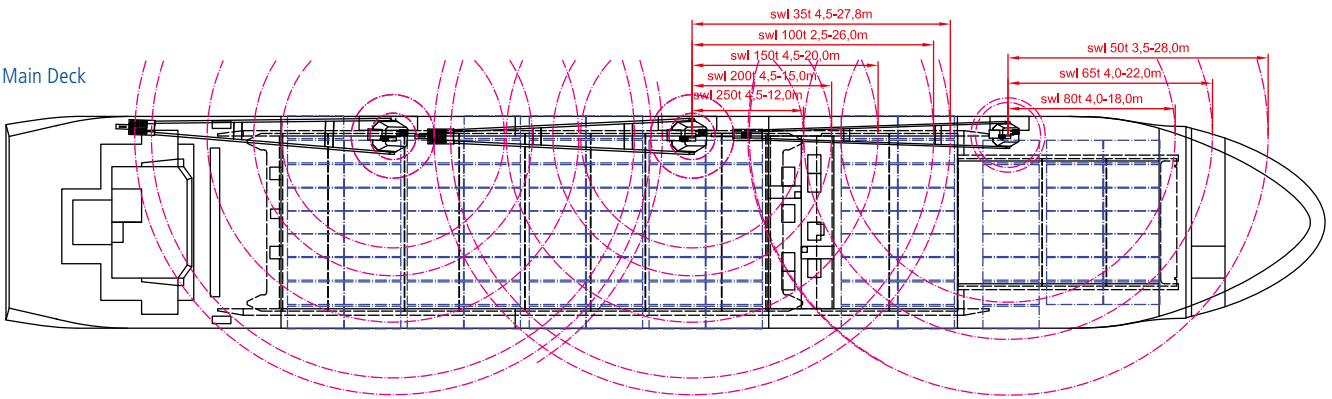
| | |
|--------------------|---|
| IMO classes | Fitted for carriage of dangerous goods of all IMO classes |
| Other | Fitted for trading Australia Bow thruster |



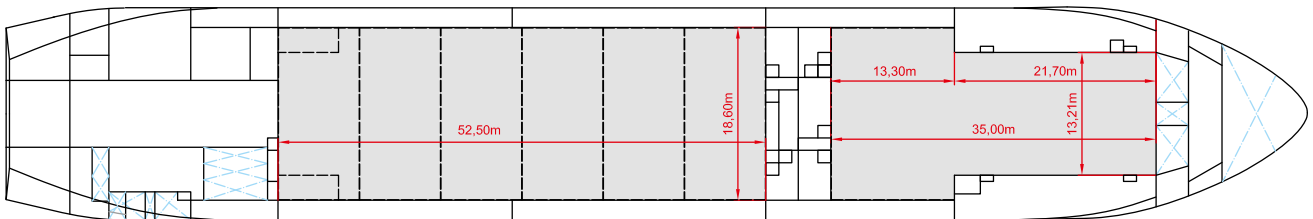
Side View



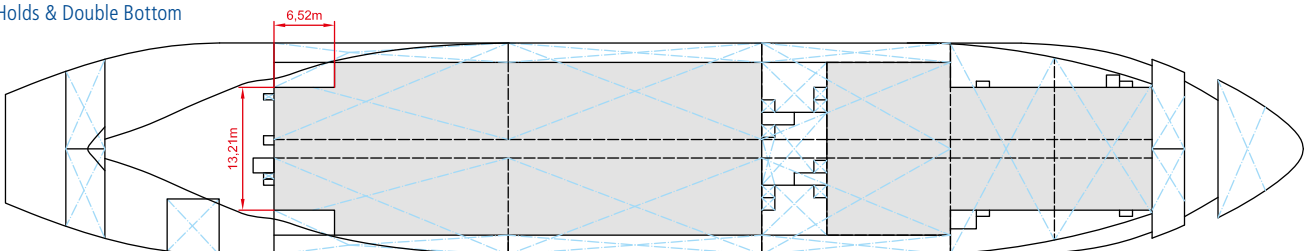
Main Deck



Tweendeck



Holds & Double Bottom



Max. speed is calculated basis 85% MCR, ballast condition, no deck cargo, maximum Beaufort 2, no swell, no adverse currents, clean hull and even keel. Service Speed and consumption at sea is calculated basis 75% MCR, laden condition, no deck cargo, maximum Beaufort 2, no swell, no adverse currents, clean hull and even keel. Eco speed is the minimum continuous speed in laden condition. Consumption data assumes reefer plugs and shaft generator disconnected but including AE if no shaft generator is installed. Vessel is burning fuel according to ISO 8217. Intake is always subject to vessel's stability, trim, permissible weights and is subject to regulations of visibility. Lifting capacity of vessel's cranes is subject to vessel's stability and can depend on cargo/ ballast on board. Container data as well as bale capacity assumes tweendeck ashore. All details including speed and consumption are given in good faith and are "about" and are given without guarantee. They must not be used as basis for charterparties or contracts without owner's explicit written authority.