



16,500 DWT / 2x400mt + 1x120mt



BRIESE SCHIFFAHRT

Vessel name	Built	IMO no.	Flag
BBC Spring	11/2010	9418999	Antigua & Barbuda

Ship's Basics

Type	Premium Project Carrier Vessel Tweendecker
Builder	Changjiang Shipping Group Qingshan, China
Classification	GL + 100 A5 E3 G IW ERS BWM SOLAS II + MC E3 AUT, strengthened for heavy cargoes, equipped for the carriage of containers, equipped for the carriage of dangerous goods

Dimensions & Main Data

Tonnage GT / NT	15,377/ 5,722
Deadweight (summer)	16,500 mt
Length o.a.	166.25 m
Length p.p.	156.00 m
Beam	22.90 m
Max. speed	17.8 knots
Service speed	16.5 knots
Consumption at sea	34.9 mt fuel per day
Consumption in port	2.4 mt fuel per day (with crane operations) 1.7 mt fuel per day (without crane operations)
Fuel on ME	RMG 380 / RME 180 / MGO DMA / MDO DMB
Fuel on AE	MGO DMA
Tank capacities	RMG 380 / RME 180 abt. 1570 cbm MGO DMA / MDO DMB abt. 235 cbm Ballast abt. 9,600 cbm Freshwater abt. 192 cbm

Propulsion

Main Engine	MAN 7L 58/64 CD 9800 kW
Aux.-Engines	Caterpillar, 3 x 620 kW
Propeller	Controllable pitch propeller

Hold and Hatch

Hold and Hatch	2 Holds / 2 Hatches
Hatch cover type	Folding type
Cargo hold capacity	22,502 cbm (794,649 cbft)
Floor space under deck	3,557 sqm (38,287 sqft)
Floor space on deck	1,992 sqm (21,442 sqft)
Deck strengths per sqm	18.00 mt on tanktop 3.50 mt on tweendeck 5.00 mt on hatcovers 8.00 mt on pontoon covers middle of hatch 2
Tweendeck	Hold 1: 2 heights Hold 2: 4 heights
Bulkheads	3 bh / 3 positions

Cargo Gear

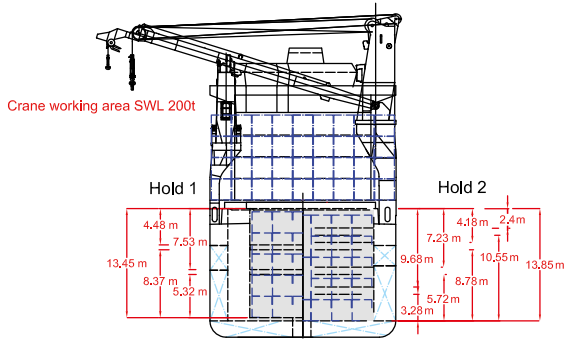
Type	2 x 400 mt + 1 x 120 mt NMF
Combinable	800 mt
Situated	2 x 400 mt portside, 1 x 120 mt starboard

Container Capacity

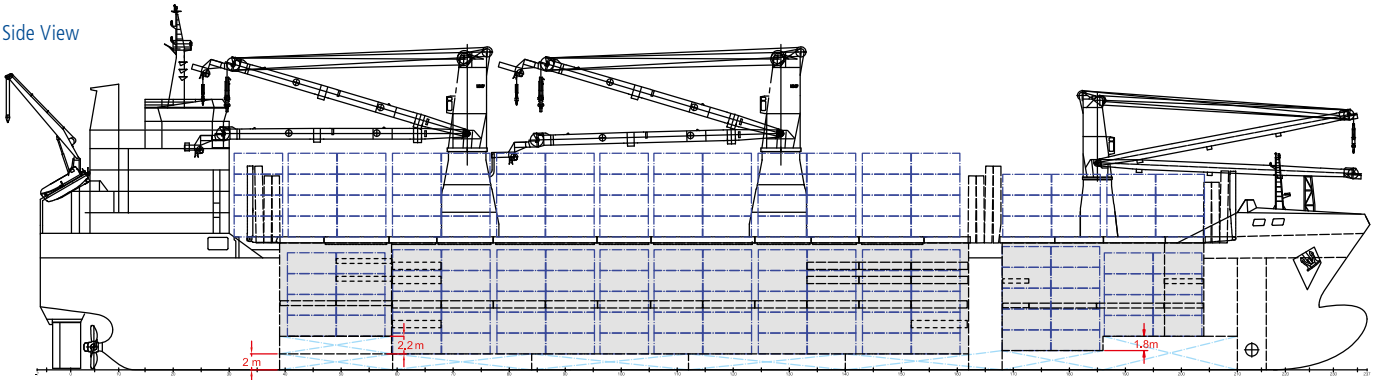
Capacity	20' or 40' + 20'
Hold	487 / 212 / 63
Deck	532 / 213 / 106
Total	1,019 / 425 / 169
TEU at 14 mt	646
Refeerplugs	122
Stackload	20' / 40'
Hold	100 / 135
Deck	60 / 100

Special Equipment / Features

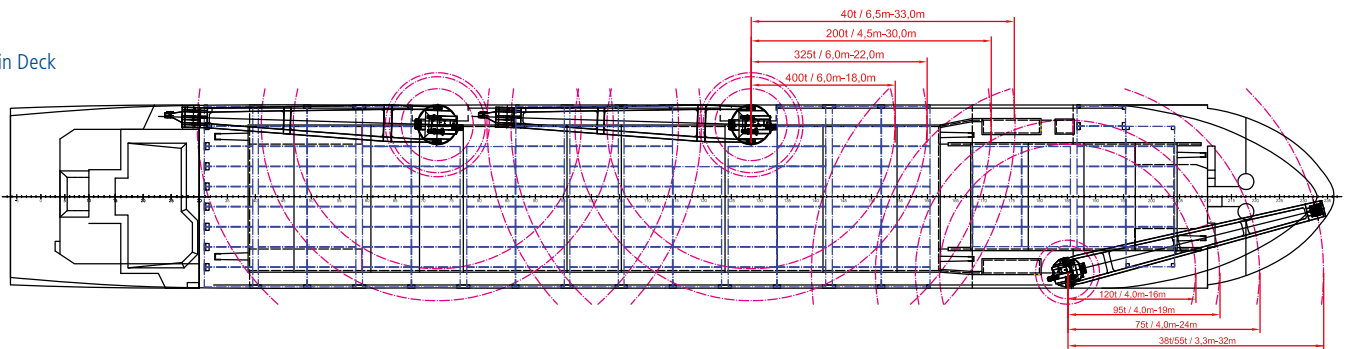
IMO classes	Fitted for carriage of dangerous goods of all IMO classes
Other	Grain fitted; Bow thruster; Shaft generator



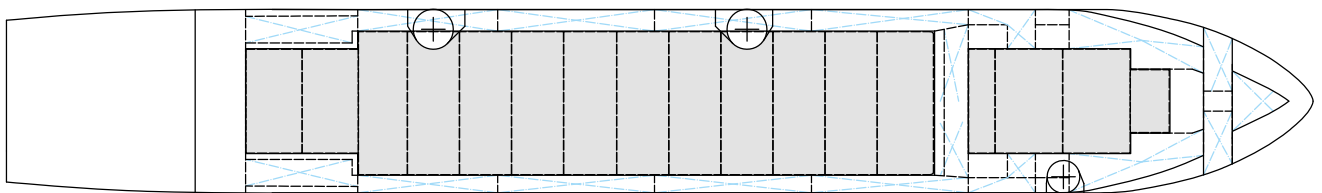
Side View



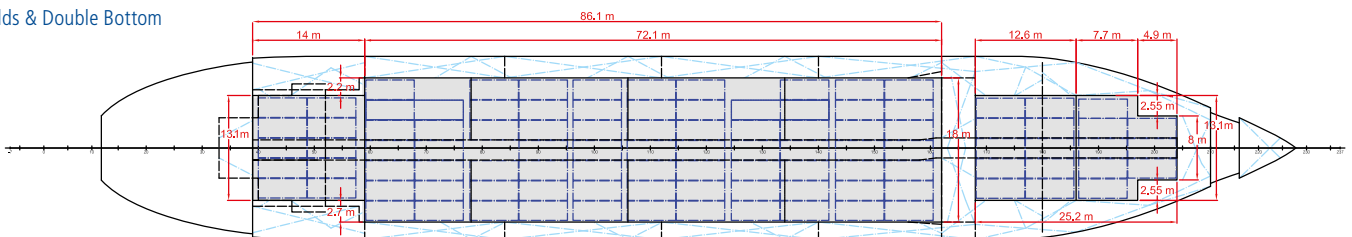
Main Deck



Tweendeck



Holds & Double Bottom



Max. speed is calculated basis 85% MCR, ballast condition, no deck cargo, maximum Beaufort 2, no swell, no adverse currents, clean hull and even keel. Service Speed and consumption at sea is calculated basis 75% MCR, laden condition, no deck cargo, maximum Beaufort 2, no swell, no adverse currents, clean hull and even keel. Eco speed is the minimum continuous speed in laden condition. Consumption data assumes reefer plugs and shaft generator disconnected but including AE if no shaft generator is installed. Vessel is burning fuel according to ISO 8217. Intake is always subject to vessel's stability, trim, permissible weights and is subject to regulations of visibility. Lifting capacity of vessel's cranes is subject to vessel's stability and can depend on cargo/ ballast on board. Container data as well as bale capacity assumes tweendeck ashore. All details including speed and consumption are given in good faith and are "about" and are given without guarantee. They must not be used as basis for charterparties or contracts without owner's explicit written authority.