



**8,200 DWT / 2 x 60 mt**



**BRIESE SCHIFFAHRT**

Vessel name	Built	IMO no.	Flag
Samba	11/2007	9428205	Antigua & Barbuda

Vessel name	Built	IMO no.	Flag
Skogafoss	07/2007	9375252	Antigua & Barbuda

### Ship's Basics

<b>Type</b>	Container Vessel Singledecker
<b>Builder</b>	Sainty Shipbuilding (Yangzhou) Corp Ltd, China
<b>Classification</b>	GL + 100 A5 E3, SOLAS II-2, Reg. 19, MC E3 AUT Nav-O

### Dimensions & Main Data

<b>Tonnage GT/NT</b>	7,584 / 3,165
<b>Deadweight (summer)</b>	8,200 mt
<b>Length o.a.</b>	129.65 m
<b>Length p.p.</b>	121.24 m
<b>Beam</b>	20.60 m
<b>Max. draft (summer)</b>	7.40 m
<b>Max. speed</b>	17.5 knots
<b>Service speed</b>	16.2 knots
<b>Consumption at sea</b>	25.3 mt fuel per day
<b>Consumption in port</b>	3.5 mt fuel per day (with crane operation) 2.5 mt fuel per day (without crane operation)
<b>Fuel on ME</b>	RMG 380 / RME 180 / MGO DMA / MDO DMB
<b>Fuel on AE</b>	MGO DMA
<b>Tank capacities</b>	RMG 380 / RME 180 abt. 688.2 cbm MGO DMS / MDO DMB abt. 112.9 cbm Ballast abt. 3,315.7 cbm Freshwater abt. 109.7 cbm

### Propulsion

<b>Main Engine</b>	MAK 8M 43C with 7,200 kW
<b>Aux.-Engines</b>	Yanmar, 3 x 550 kW
<b>Propeller</b>	Controllable pitch propeller

### Hold and Hatch

<b>Hold and Hatch</b>	3 Holds / 4 Hatches
<b>Hatch cover type</b>	Folding type
<b>Cargo hold capacity</b>	12,643 cbm (446,483 cbft)
<b>Tweendeck</b>	n / a
<b>Bulkheads</b>	n / a

### Cargo Gear

<b>Type</b>	2 x 60 mt Mac Gregor
<b>Hoisting Speed</b>	60 mt, 0 m - 13.00 m/min; 40 mt 0 m - 16.00 m/min 34 mt, 0 m - 16.00 m/min; 22 mt, 0 m - 25.00 m/min
<b>Situated</b>	Portside

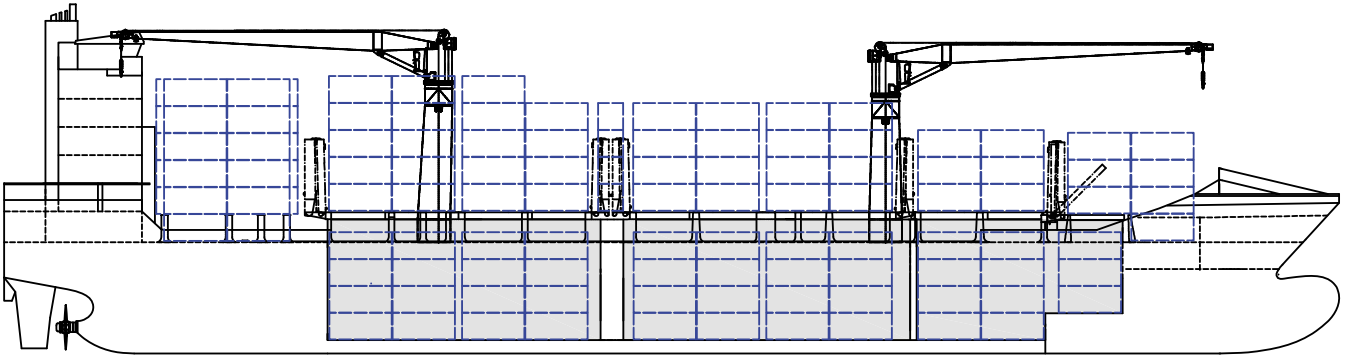
### Container Capacity

<b>Capacity</b>	20' / 40' + 20'
<b>Hold</b>	226 / 106 + 14
<b>Deck</b>	453 / 207 + 20
<b>Total</b>	679 / 313 + 34
<b>TEU at 14 mt</b>	425
<b>Reeferplugs</b>	On deck: 86; Holds: 34; Total: 120
<b>Stackload</b>	20' / 40'
<b>Deck</b>	60 / 90
<b>Tanktop</b>	120 / 140
<b>Specials</b>	Equipped for high cubes (9'6") 45' Container on deck and wide bodies

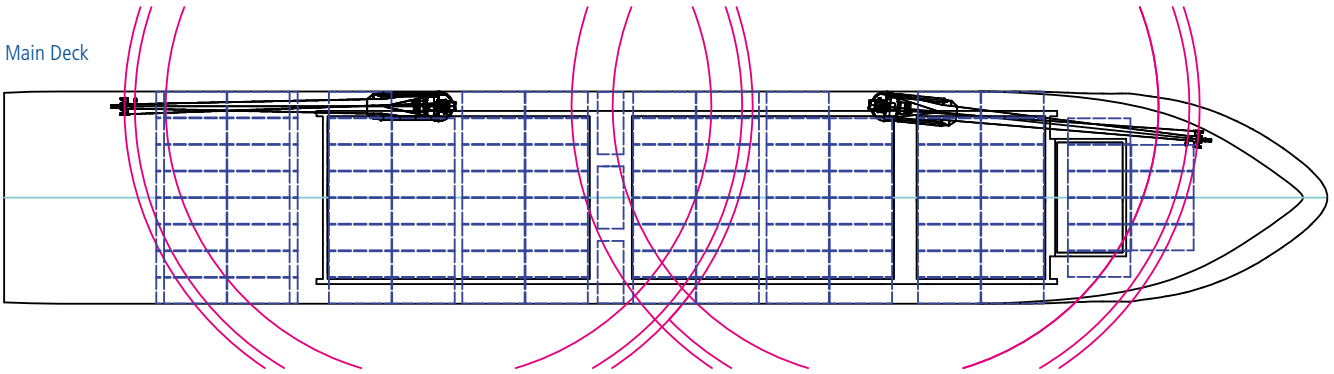
### Special Equipment / Features

<b>IMO classes</b>	Fitted for carriage of dangerous goods of all IMO classes
<b>Other</b>	Fitted for trading Australia Not bulk / grain fitted Freshwater Generator, fully cellular (movable) Bow thruster; Shaft generator

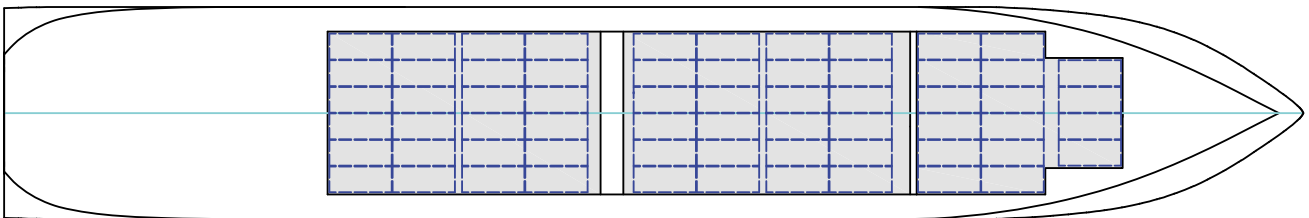
Side View



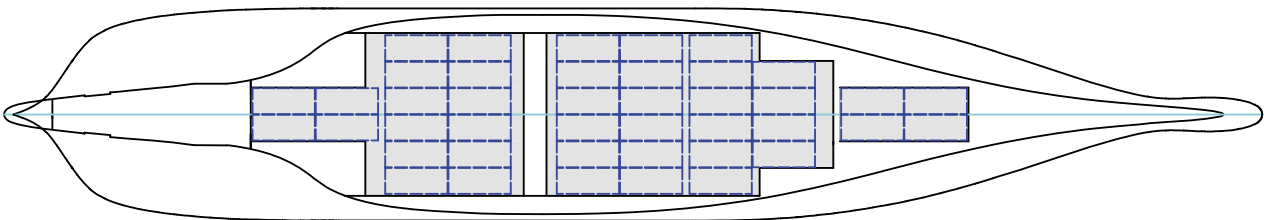
Main Deck



Tweendeck



Holds & Double Bottom



Max. speed is calculated basis 85% MCR, ballast condition, no deck cargo, maximum Beaufort 2, no swell, no adverse currents, clean hull and even keel. Service Speed and consumption at sea is calculated basis 75% MCR, laden condition, no deck cargo, maximum Beaufort 2, no swell, no adverse currents, clean hull and even keel. Eco speed is the minimum continuous speed in laden condition. Consumption data assumes reefer plugs and shaft generator disconnected but including AE if no shaft generator is installed. Vessel is burning fuel according to ISO 8217. Intake is always subject to vessel's stability, trim, permissible weights and is subject to regulations of visibility. Lifting capacity of vessel's cranes is subject to vessel's stability and can depend on cargo/ ballast on board. Container data as well as bale capacity assumes tweendeck ashore. All details including speed and consumption are given in good faith and are "about" and are given without guarantee. They must not be used as basis for charterparties or contracts without owner's explicit written authority.