



Anmiro Singledecker / gearless

Vessel name	Built	IMO no.	Flag
Anmiro	2009	9434577	Antigua & Barbuda
Anmare	2009	9434589	Antigua & Barbuda

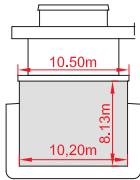
MAIN DATA

Vessel type	Multipurpose Singledecker
Classification	Germanischer Lloyd
GT/NT	2,461 / 1,369
DWCC (summer)	3,550 mt
Max. draft (summer)	5.51 m
Length o.a.	87.90 m
Breadth	12.80 m
Air draft (summermark)	18.70 m
Design Speed	11.7 knots

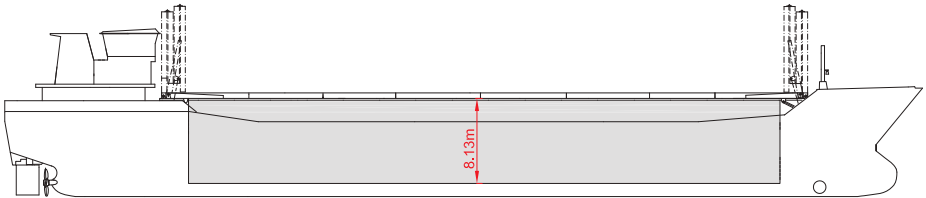
HOLDS/HATCHES/CRANES

Cargo hold capacity	4,672 cbm / 164,990 cbft
Floor space under deck	560 sqm / 6,028 sqft
Floor space on deck	590 sqm / 6,351 sqft
Deck strengths per sqm	15.00 mt on tanktop 1.00 mt on hatchcovers

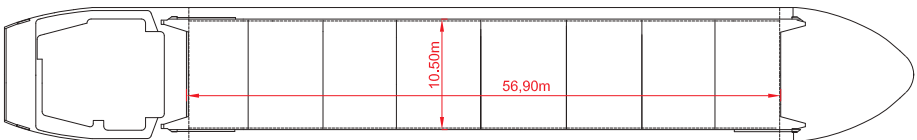
Speed figures are calculated basis maximum Beaufort 2, no swell and no adverse currents and assumes shaft generator and reefer plugs disconnected. Vessel is burning fuels according to minimum ISO 8217-2010. Intake is always subject to vessel's stability, trim, permissible weights and is subject to regulations of visibility. All details are given in good faith and are "about" and are given without guarantee. They must not be used as basis for charterparties or contracts without Briese Chartering's explicit written authority.



SIDE VIEW



MAIN DECK



HOLDS & DOUBLE BOTTOM

