



11,819 DWT / 2 x 250 mt



BRIESE SCHIFFFAHRT

Vessel name	Built	IMO no.	Flag
BBC Louise	2018	9685097	Antigua & Barbuda

Ship's Basics

Type	Premium Project Carrier Vessel Multipurpose Cargo
Builder	Taizhou Sanfu Shipyard / China
Classification	DNVGL + 100 A5 E3 BWM (D2) equipped for the carriage of containers DBC DG + IW + G + MC E3 AUT CM-PS strengthened for heavy cargoes

Dimensions & Main Data

Tonnage GT/NT	9,719 / 4,208
Deadweight (summer)	11,819 mt
Length o.a.	138.00 m
Length p.p.	131.82 m
Beam	21.40 m
Max. draft (summer)	11.00 m
Max. speed	16.0 knots
Service speed	14.1 knots
Consumption at sea	13.5 mt
Consumption in port	2.2 mt fuel per day (without crane operations) 3.5 mt fuel per day (with crane operations)
Fuel on ME	RMG 380 / RME 180 / MGO DMB / MGO OMA
Fuel on AE	RMG 380 / RME 180 / MGO DMB / MGO OMA
Tank capacities	RMG 380 / RME 180 abt. 606,9 cbm MGO DMB / MGO OMA abt. 226,9 cbm Ballast abt. 5.485 cbm Freshwater abt. 198,3 cbm

Propulsion

Main Engine	YMD-MAN B&W 6S40ME-B9.3, 5,460 kW
Aux.-Engines	MAN, 3 x 660 kW
Propeller	Fixed pitch propeller

Hold and Hatch

Hold and Hatch	2 Holds / 2 Hatches
Hatch cover type	Folding type
Cargo hold capacity	15.575,1 cbm (550,028 cbft)
Floor space under deck	1.350,71 sqm (14,539 sqft)
Floor space on deck	1.370 sqm (14,747 sqft)
Deck strengths per sqm	On tanktop: 16.00 mt Hold No. 1: Tank Top 16.0 t/m ² ; T/Deck 3.5 t/m ² ; Hatch 1.75 t/m ² Hold No. 2: Tank Top 16.0 t/m ² ; T/Deck 3.5 t/m ² ; Hatch 1.75 t/m ²

Tweendeck

Tweendeck pontoons correspond with holds dimensions in the 2 holds to use as bulkheads /

Bulkheads

Cargo Gear

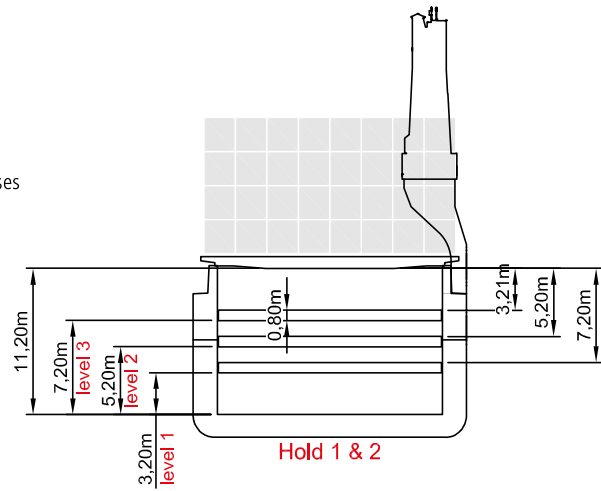
Type	2 x 250 mt McGregor cranes
Combinable	500 mt
Situated	Portside

Container Capacity

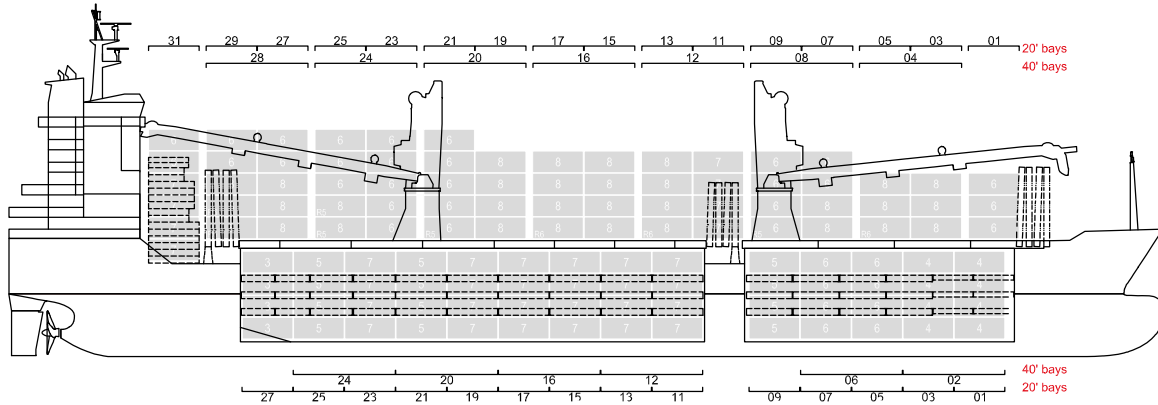
Capacity	802 TEU (TW,DK not onboard)
Hold	642 TEU
Deck	762 TEU
Total	1.404 TEU
TEU at 14 mt	500 TEU
Reeferplugs	50
Stackload	20' / 40'
Hold	mt / mt
Hatchcover	mt / mt
Tweendeck	mt / mt
Specials	/

Special Equipment / Features

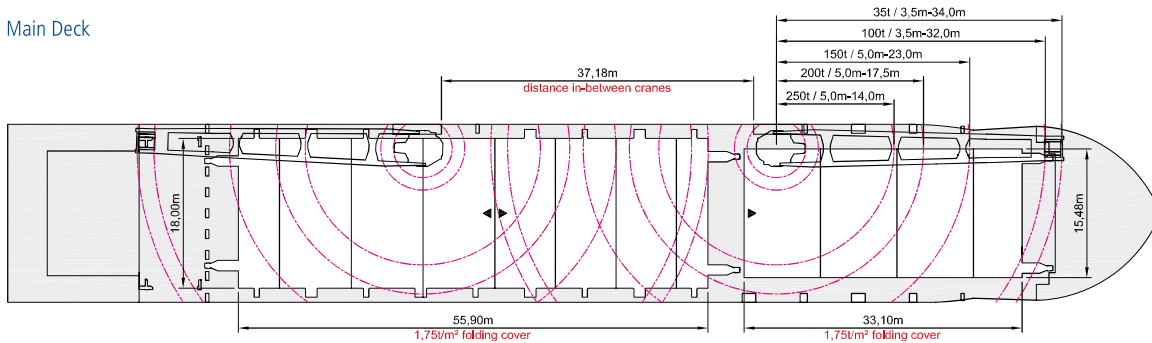
IMO classes Fitted for carriage of dangerous goods of all IMO classes
 Other Fitted for trading Great Lakes and Australia



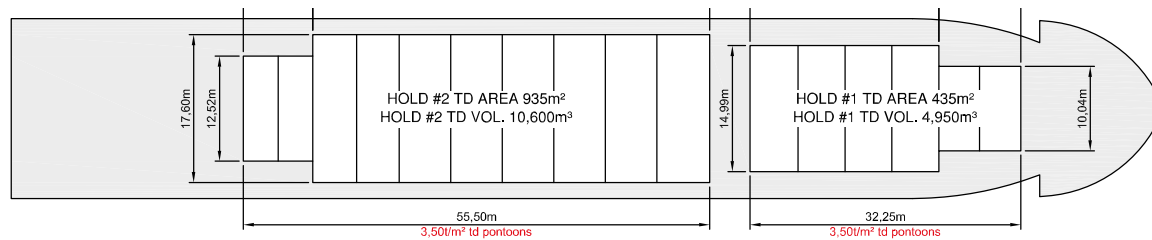
Side View



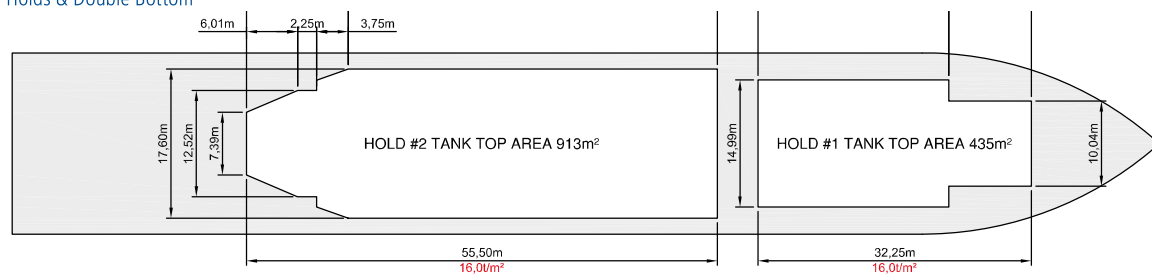
Main Deck



Tweendeck



Holds & Double Bottom



Max. speed is calculated basis 85% MCR, ballast condition, no deck cargo, maximum Beaufort 2, no swell, no adverse currents, clean hull and even keel. Service Speed and consumption at sea is calculated basis 75% MCR, laden condition, no deck cargo, maximum Beaufort 2, no swell, no adverse currents, clean hull and even keel. Eco speed is the minimum continuous speed in laden condition. Consumption data assumes reefer plugs and shaft generator disconnected but including AE if no shaft generator is installed. Vessel is burning fuel according to ISO 8217. Intake is always subject to vessel's stability, trim, permissible weights and is subject to regulations of visibility. Lifting capacity of vessel's cranes is subject to vessel's stability and can depend on cargo/ ballast on board. Container data as well as bale capacity assumes tweendeck ashore. All details including speed and consumption are given in good faith and are "about" and are given without guarantee. They must not be used as basis for charterparties or contracts without owner's explicit written authority.