



17,907 DWT / 3 x 80 mt



BRIESE SCHIFFFAHRT

| Vessel name | Built | IMO no. | Flag |
|--------------------------|-------|---------|-------------------|
| BBC Regalia | 2012 | 9539389 | Antigua & Barbuda |
| BBC Raise ^(A) | 2011 | 9538880 | Antigua & Barbuda |

| Vessel name | Built | IMO no. | Flag |
|-------------|-------|---------|-------------------|
| BBC Rhine | 2013 | 9539377 | Antigua & Barbuda |

Ship's Basics

| | |
|----------------|---|
| Type | Project Carrier Vessel Tweendecker |
| Builder | Wuhu Xinlian Shipbuilding Co. Ltd. |
| Classification | Class NK ⁽¹⁾ / DNV ^{(2)(A)} |

Dimensions & Main Data

| | |
|---------------------|--|
| Tonnage GT/NT | 14,859 / 6,315 |
| Deadweight (summer) | 17,907 mt |
| Length o.a. | 161.50 m |
| Length p.p. | 153.50 m |
| Beam | 25.20 m |
| Max. draft (summer) | 8.61 m |
| Max. speed | 17.0 knots |
| Service speed | 15.6 knots |
| Consumption at sea | IFO 30,1 mts/day + IFO 2,5 mts/day for AE |
| Consumption in port | 3 cranes working: IFO 4,5 mts/day + Boiler 1,5 mts/day |
| Eco speed | 13 kn at 20 mts / day + 2,5 mts/day for AE |
| Fuel on ME | IFO380, RMG 380, ISO 8217:2012, MDO - DMB, ISO 8217:2012 |
| Fuel on AE | IFO380, RMG 380, ISO 8217:2012, MDO - DMB, ISO 8217:2012 |
| Tank capacities | HFO - 100 %, 1721 m ³ ⁽¹⁾ / 1663 m ³ ⁽²⁾ MDO - 100 %, 145,6 m ³ ⁽¹⁾ / 175,9 m ³ ⁽²⁾ |

Propulsion

| | |
|--------------|------------------------------------|
| Main Engine | MAN B&W, 6S50MC-C / 9.960 kw |
| Aux.-Engines | B&W / 3 x 6L23 / 30 H - 960kW |
| Propeller | 1 fixed pitch propeller - 4 blades |

Hold and Hatch

| | |
|------------------------|---------------------------|
| Hold and Hatch | 3 Holds / 3 Hatches |
| Hatch cover type | Hydraulic folding |
| Cargo hold capacity | 25,521 cbm (901,263 cbft) |
| Floor space under deck | 3.836 sqm (41.290 sqft) |
| Floor space on deck | 2.008 sqm (21.614 sqft) |
| Deck strengths per sqm | 18.00 mt on tanktop |
| Tweendeck | 3,5 mt / sqm |
| Bulkheads | 2,5 mt / sqm |

Cargo Gear

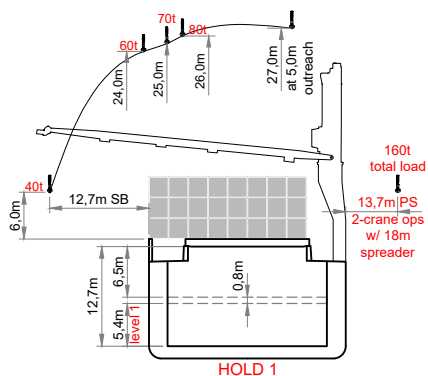
| | |
|------------|------------------------|
| Type | Mc Gregor , 3 x 80 mts |
| Combinable | 160 mts |
| Situated | Portside |

Container Capacity

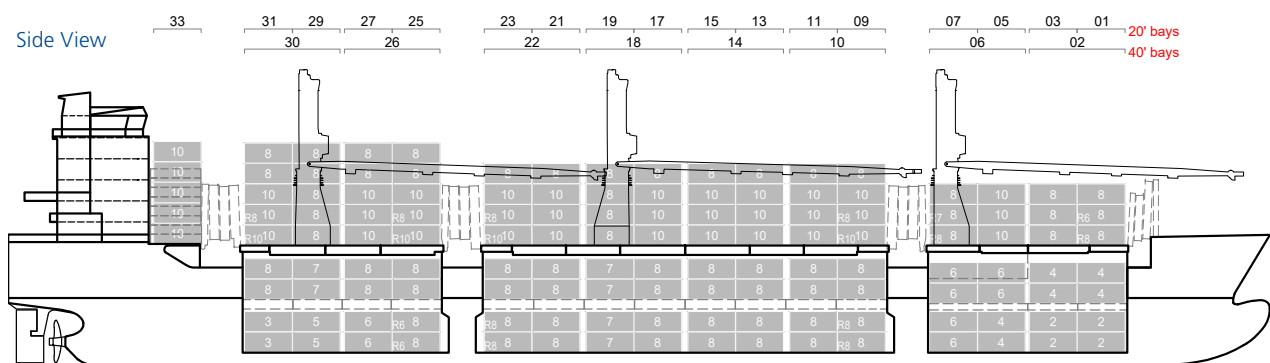
| | |
|--------------|---|
| Hold | 426 TEU ⁽¹⁾ / 424 TEU ⁽²⁾ |
| Deck | 628 TEU ⁽¹⁾ / 623 TEU ⁽²⁾ |
| Total | 1054 TEU ⁽¹⁾ / 1051 TEU ⁽²⁾ |
| TEU at 14 mt | |
| Reeferplugs | 144 |
| Stackload | 20' / 40' |
| Hold | 100 mt / 120 mt |
| Deck | 60 mt / 80 mt |

Special Equipment / Features

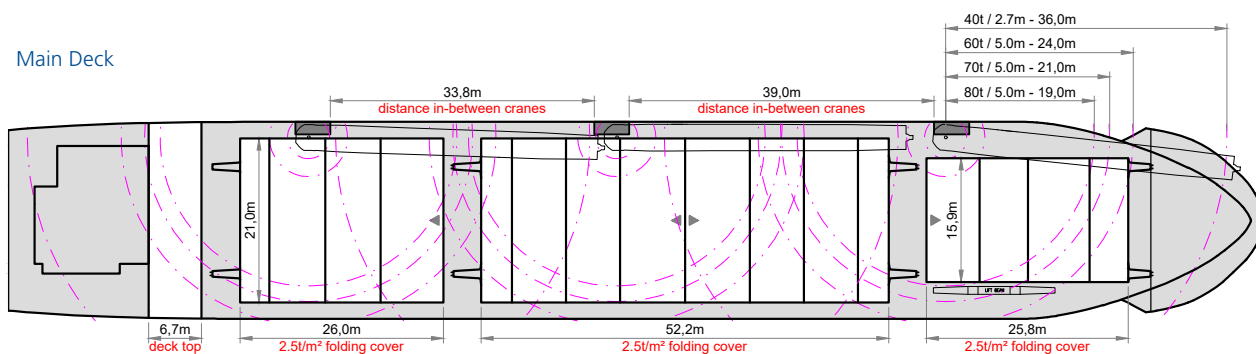
| | |
|-------------|---|
| IMO classes | Fitted for carriage of dangerous goods of all IMO classes |
| Other | Fitted for Carriage of Solid Bulk Cargoes and grains, Strengthened for heavy cargo, BWM; Bow thruster, Australia fitted |



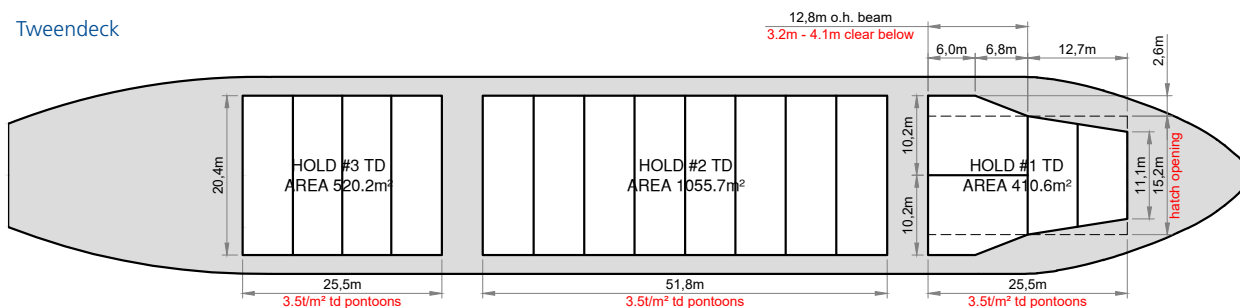
Side View



Main Deck



Tweendeck



HOLDS & DOUBLE BOTTOM

