



BBC Bahrain Tweendecker / geared

Vessel name	Built	IMO no.	Flag
BBC Bangkok	2011	9437165	Antigua & Barbuda
BBC Belem	2011	9501655	Antigua & Barbuda
BBC Bahrain	2012	9578751	Antigua & Barbuda
BBC Bergen	2011	9437153	Madeira
BBC Brisbane	2012	9578763	Antigua & Barbuda
BBC Balboa	2012	9501667	Antigua & Barbuda

MAIN DATA

Vessel type	Multipurpose Tweendecker
Classification	Germanischer Lloyd
Ice class	E3 (Finish 1A)
GT/NT	6310 / 2841
DWCC (summer)	7,300 mt
Max. draft (summer)	7.00 m
Length o.a.	128.42 m
Breadth	16.50 m
Air draft (summer mark)	29.20 m
Design Speed	13.5 knots

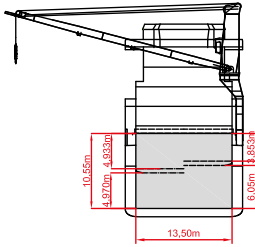
HOLDS/HATCHES/CRANES

Cargo hold capacity	10,770 cbm / 380,181 cbft
Floor space under deck	2,209 sqm / 23,769 sqft
Floor space on deck	1,201 sqm / 12,923 sqft
Cranes	2 NMF cranes situated portside 85 mt capacity each / 120 mt capacity combined 170 mt capacity combined
Deck strengths per sqm	15.0 mt on tanktop 2.50 mt on tweendeck 3.50 mt on hatchcovers

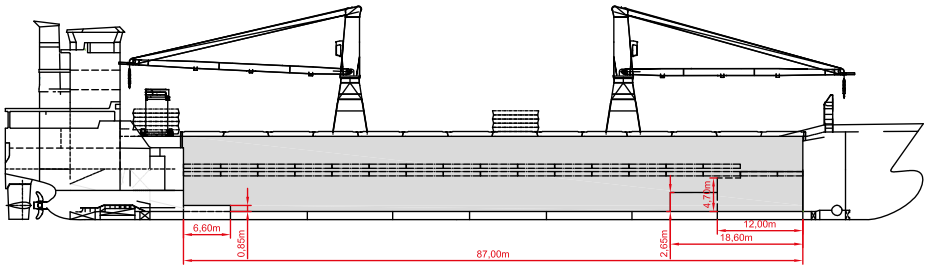
CONTAINER CAPACITY

Capacity	20' or 40' + 20'
Hold	253 / 112 / 29
Deck	202 / 94 / 14
Total	455 / 206 / 43
TEU at 14 to	333
Reeferplugs	0
Stackload	20' / 40'
Tanktop	96 mt / 120 mt
Deck	25 mt / 40 mt
Specials	Equipped for wide body and 9'6 ft height containers

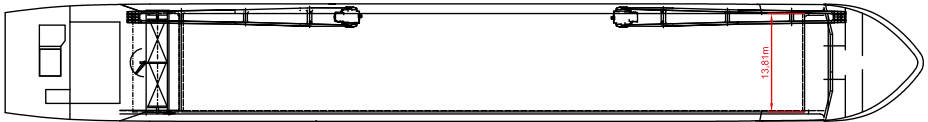
Speed figures are calculated basis maximum Beaufort 2, no swell and no adverse currents and assumes shaft generator and reefer plugs disconnected. Vessel is burning fuels according to minimum ISO 8217-2010. Intake is always subject to vessel's stability, trim, permissible weights and is subject to regulations of visibility. All details are given in good faith and are "about" and are given without guarantee. They must not be used as basis for charterparties or contracts without Briese Chartering's explicit written authority.



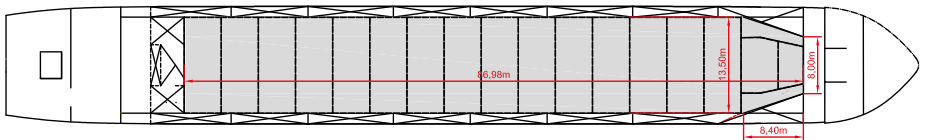
SIDE VIEW



MAIN DECK



TWEENDECK



HOLDS & DOUBLE BOTTOM

