



BBC Bergen Tweendecker / geared

Vessel name	Built	IMO no.	Flag
BBC Bergen	2011	9437153	Portugal
BBC Belem	2011	9501655	Antigua & Barbuda
BBC Bahrain	2012	9578751	Antigua & Barbuda
BBC Bangkok	2011	9437165	Antigua & Barbuda
BBC Brisbane	2012	9578763	Antigua & Barbuda
BBC Balboa	2012	9501667	Antigua & Barbuda

MAIN DATA

Vessel type	Multipurpose Tweendecker
Classification	DNV
Ice class	Finnish 1A
GT/NT	6,310 / 2,841
DWAT	8,000 mt
Max. draft (summer)	7.00 m
Length o.a.	128.42 m
Breadth	16.50 m
Height above keel	35.60 m
Speed	12.5 knots
Bowthruster	409 kW

FEATURES

Equipped for wide body and high cube containers
 Fitted for carriage of dangerous goods of all IMO classes
 Fitted for the carriage of solid bulk and grain cargo

HOLDS/HATCHES/CRANES

Cargo hold capacity with TD panels	10,770 cbm / 380,181 cbft
Cargo hold capacity without TD panels	11,500 cbm / 406,365 cbft
Floor space under deck	2,209 sqm / 23,769 sqft
Floor space on deck	1,201 sqm / 12,923 sqft
Cranes	2 NMF cranes situated portside up to 85 mt capacity each / up to 170 mt capacity combined
Deck strength per sqm	15.00 mt on tanktop 2.50 mt on tweendeck 3.50 mt on hatchcovers

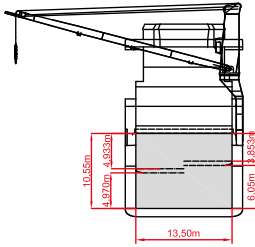
CONTAINER CAPACITY

Capacity	20' or 40' + 20'
Hold	253 / 112 / 29
Deck	202 / 94 / 14
Total	455 / 206 / 43
TEU at 14 mt	333
Stackload	20' / 40'
Tanktop	96 mt / 120 mt
Deck	35 mt / 54 mt

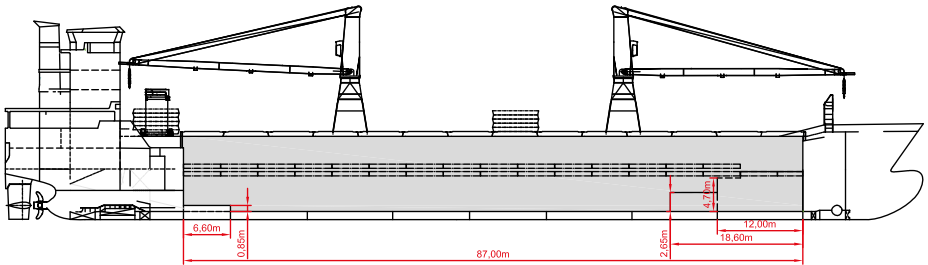
Speed figures are calculated basis maximum Beaufort 2, no swell and no adverse currents and assumes shaft generator and reefer plugs disconnected. Vessel is burning fuels according to minimum ISO 8217-2010. Intake is always subject to vessel's stability, trim, permissible weights and is subject to regulations of visibility.

Lifting capacity of vessels' cranes is subject to vessels's stability and depends on cargo /ballast on board.

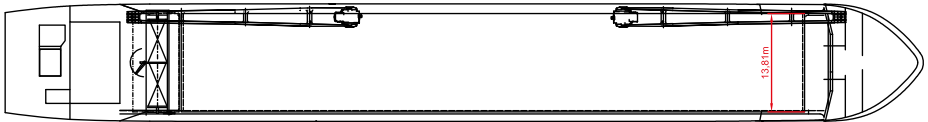
All details are given in good faith and are "about" and are given without guarantee. They must not be used as basis for charterparties or contracts without Briese Chartering's explicit written authority.



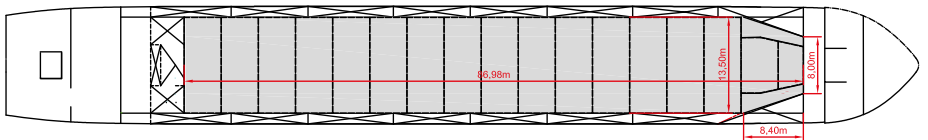
SIDE VIEW



MAIN DECK



TWEENDECK



HOLDS & DOUBLE BOTTOM

