



BBC Lima Tweendecker / geared

Vessel name	Built	IMO no.	Flag
BBC London	2011	9513658	Antigua & Barbuda
BBC Lisbon	2011	9513634	Antigua & Barbuda
BBC Lima	2010	9513622	Madaira
BBC Livorno	2012	9570670	Antigua & Barbuda
BBC Lagos	2012	9570668	Antigua & Barbuda

MAIN DATA

Vessel type	Multipurpose Tweendecker
Classification	Germanischer Lloyd
Ice class	E3 (Finish 1A)
GT/NT	7,138 / 2,266
DWCC (summer)	7,200 mt
Max. draft (summer)	7.00 m
Length o.a.	130.20 m
Breadth	16.50 m
Air draft (summer mark)	30.60 m
Design Speed	12.5 knots

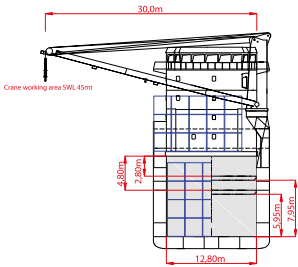
HOLDS/HATCHES/CRANES

Cargo hold capacity	12,181 cbm / 430,167 cbft
Floor space under deck	2,179 sqm / 23,463 sqft
Floor space on deck	1,133sqm / 12,197 sqft
Cranes	2 NMF cranes situated portside 80 mt capacity each / 160 mt capacity combined
Deck strengths per sqm	15.0 mt on tanktop 3.00 mt on tweendeck 1.75 mt on hatchcovers

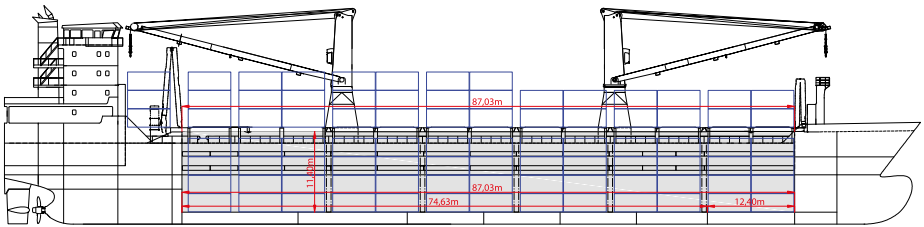
CONTAINER CAPACITY

Capacity	20' or 40' + 20'
Hold	244
Deck	267
Total	511
TEU at 14 to	320
Reeferplugs	30 on deck
Stackload	20' / 40'
Hold	67 mt / 67 mt
Deck	40 mt / 55 mt

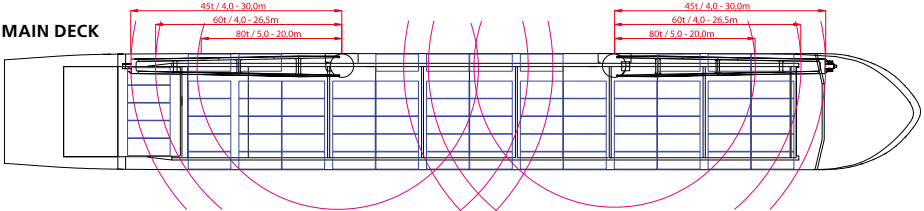
Speed figures are calculated basis maximum Beaufort 2, no swell and no adverse currents and assumes shaft generator and reefer plugs disconnected. Vessel is burning fuels according to minimum ISO 8217-2010. Intake is always subject to vessel's stability, trim, permissible weights and is subject to regulations of visibility. All details are given in good faith and are "about" and are given without guarantee. They must not be used as basis for charterparties or contracts without Briese Chartering's explicit written authority.



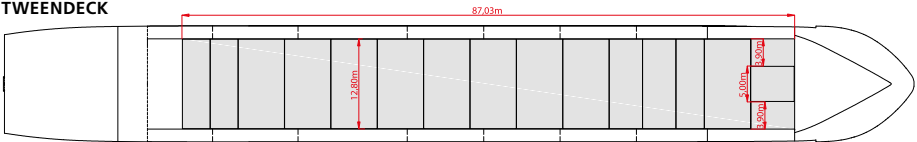
SIDE VIEW



MAIN DECK



TWEENDECK



HOLDS & DOUBLE BOTTOM

