



## BBC Lima Tweendecker / geared

Vessel name	Built	IMO no.	Flag
BBC Lima	2010	9513622	Portugal
BBC Lisbon	2011	9513634	Antigua & Barbuda
BBC London	2011	9513658	Antigua & Barbuda
BBC Livorno	2012	9570670	Antigua & Barbuda
BBC Lagos	2012	9570668	Antigua & Barbuda

### MAIN DATA

Vessel type	Multipurpose Tweendecker
Classification	DNV
Ice class	Finnish 1A
GT/NT	7,138 / 2,266
DWAT	7,800 mt
Max. draft (summer)	7.00 m
Length o.a.	130.20 m
Breadth	16.50 m
Height above keel	37.05 m
Speed	12.0 knots
Bowthruster	409 kW

### FEATURES

Fitted for carriage of dangerous goods of all IMO classes  
Fitted for the carriage of solid bulk and grain cargo

Speed figures are calculated basis maximum Beaufort 2, no swell and no adverse currents and assumes shaft generator and reefer plugs disconnected. Vessel is burning fuels according to minimum ISO 8217-2010. Intake is always subject to vessel's stability, trim, permissible weights and is subject to regulations of visibility.

Lifting capacity of vessels' cranes is subject to vessels's stability and depends on cargo /ballast on board.

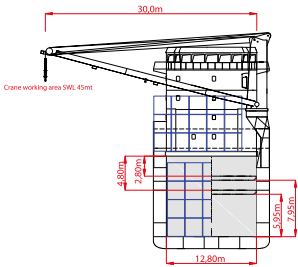
All details are given in good faith and are "about" and are given without guarantee. They must not be used as basis for charterparties or contracts without Briese Chartering's explicit written authority.

### HOLDS/HATCHES/CRANES

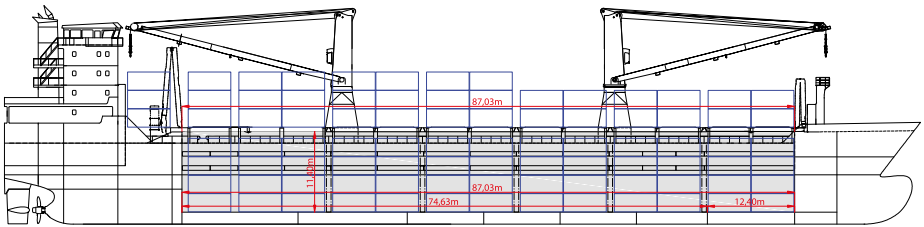
Cargo hold capacity with TD panels	11,512 cbm / 406,546 cbft
Cargo hold capacity without TD panels	12,181 cbm / 430,167 cbft
Floor space under deck	2,179 sqm / 23,463 sqft
Floor space on deck	1,133sqm / 12,197 sqft
Cranes	2 NMF cranes situated portside up to 80 mt capacity each up to 160 mt capacity combined
Deck strength per sqm	15.00 mt on tanktop 3.00 mt on tweendeck 1.75 mt on hatchcovers

### CONTAINER CAPACITY

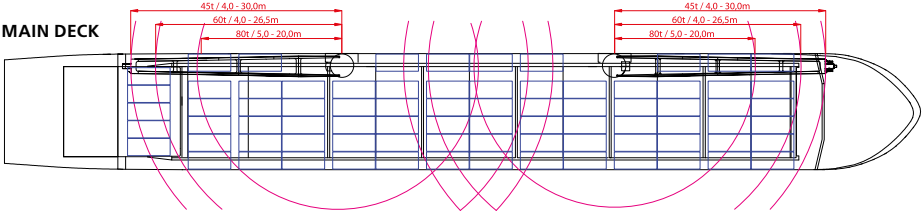
Capacity	20' or 40'
Hold	244 or 110
Deck	267 or 105
Total	511 or 215
TEU at 14 mt	320
Reeferplugs	30 on deck
Stackload	20' / 40'
Hold	90 mt / 120 mt
Deck	40 mt / 60 mt



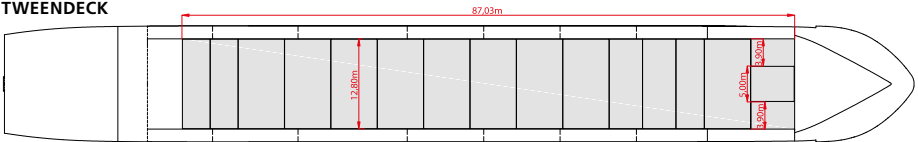
**SIDE VIEW**



**MAIN DECK**



**TWEENDECK**



**HOLDS & DOUBLE BOTTOM**

