



Anna Tweendecker / gearless

Vessel name	Built	IMO no.	Flag
Anna	2011	9566796	Antigua & Barbuda
Ostbense	2011	9566784	Antigua & Barbuda

MAIN DATA

Vessel type	Multipurpose Tweendecker
Classification	Bureau Veritas
Ice class	1A (Finish 1A)
GT/NT	5044 / 2718
DWCC (summer)	7,000 mt
Max. draft (summer)	6.50 m
Length o.a.	125.79 m
Breadth	14.40 m
Air draft (summer mark)	23.90 m
Design Speed	12.8 knots

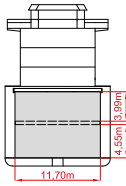
HOLDS/HATCHES

Cargo hold capacity	9,175 cbm / 323,884 cbft
Floor space under deck	2,141 sqm / 23,045 sqft
Floor space on deck	1,148 sqm / 12,352 sqft
Deck strengths per sqm	15.00 mt on tanktop 2.50 mt on tweendeck 2.20 mt on hatchcovers

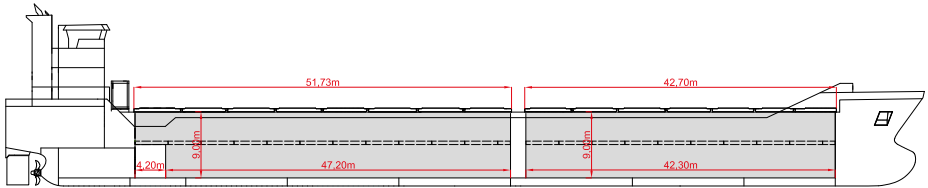
CONTAINER CAPACITY

Capacity	20' or 40' + 20'
Hold	162 / 78 / 6
Deck	144 / 72 / 0
Total	306 / 112 / 6
TEU at 14 to	218
Reeferplugs	0
Stackload	20' / 40'
Tanktop	58.5 mt / 63.5 mt
Deck	24 mt / 40 mt
Specials	Additionally equipped for 45' container

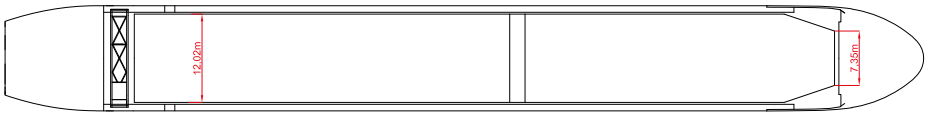
Speed figures are calculated basis maximum Beaufort 2, no swell and no adverse currents and assumes shaft generator and reefer plugs disconnected. Vessel is burning fuels according to minimum ISO 8217-2010. Intake is always subject to vessel's stability, trim, permissible weights and is subject to regulations of visibility. All details are given in good faith and are "about" and are given without guarantee. They must not be used as basis for charterparties or contracts without Briese Chartering's explicit written authority.



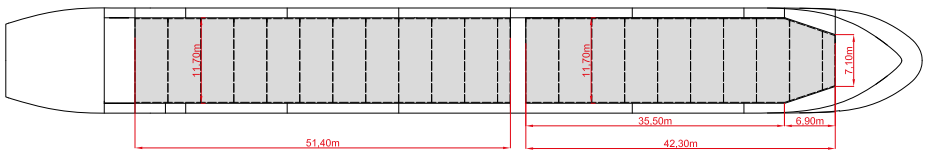
SIDE VIEW



MAIN DECK



TWEENDECK



HOLDS & DOUBLE BOTTOM

