



Anna Tweendecker / gearless

Vessel name	Built	IMO no.	Flag
Anna	2011	9566796	Antigua & Barbuda
Ostbense	2011	9566784	Antigua & Barbuda

MAIN DATA

Vessel type	Multipurpose Tweendecker
Classification	Bureau Veritas
Ice class	Finnish 1A
GT/NT	5,044 / 2,718
DWAT	7,700 mt
Max. draft (summer)	6.50 m
Length o.a.	125.79 m
Breadth	14.40 m
Height above keel	31.60 m
Speed	11.5 knots
Bowthruster	350 kW

FEATURES

Additionally equipped for 45' container
 Fitted for carriage of dangerous goods of all IMO classes
 Fitted for the carriage of solid bulk and grain cargo

HOLDS/HATCHES

Cargo hold capacity with TD panels	9,175 cbm / 323,884 cbft
Cargo hold capacity without TD panels	9,728 cbm / 343,556 cbft
Floor space under deck	2,141 sqm / 23,045 sqft
Floor space on deck	1,148 sqm / 12,352 sqft
Deck strength per sqm	15.00 mt on tanktop 2.50 mt on tweendeck 2.20 mt on hatchcovers

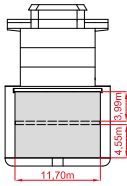
CONTAINER CAPACITY

Capacity	20' or 40' + 20'
Hold	162 or 78 + 6
Deck	144 or 72
Total	306 or 150 + 6
TEU at 14 mt	218
Stackload	20' / 40'
Tanktop	58 mt / 63 mt
Deck	24 mt / 40 mt

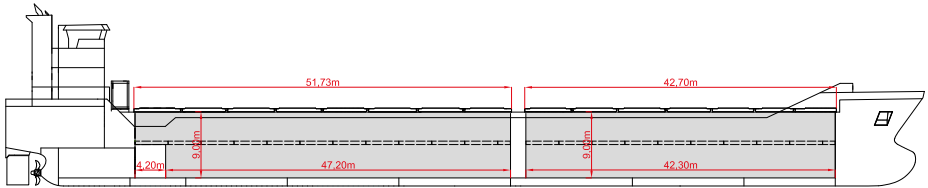
Speed figures are calculated basis maximum Beaufort 2, no swell and no adverse currents and assumes shaft generator and reefer plugs disconnected. Vessel is burning fuels according to minimum ISO 8217-2010. Intake is always subject to vessel's stability, trim, permissible weights and is subject to regulations of visibility.

Lifting capacity of vessels' cranes is subject to vessels's stability and depends on cargo /ballast on board.

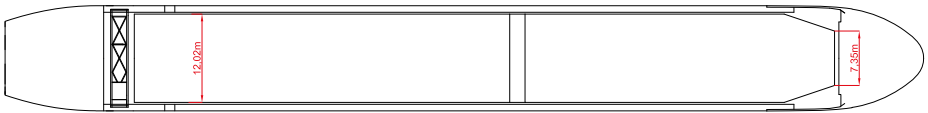
All details are given in good faith and are "about" and are given without guarantee. They must not be used as basis for charterparties or contracts without Briese Chartering's explicit written authority.



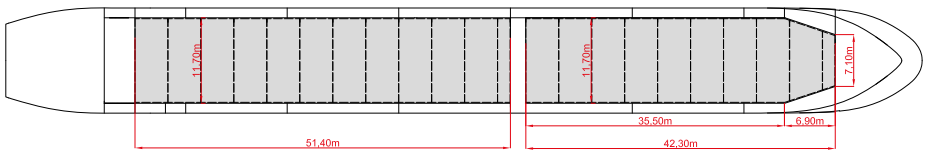
SIDE VIEW



MAIN DECK



TWEENDECK



HOLDS & DOUBLE BOTTOM

